

Click Bond adhesive-bonded bushings improve the process of assembling and securing secondary components to structures manufactured from materials requiring local reinforcement, such as composite sandwich panels used in lightweight interiors. These products eliminate the invasive preparation processes and weight gain traditionally associated with potted inserts while preventing ingress of water to composite panel core materials.

Features

- Installation fixture delivers optimal bond strength and repeatable, reliable installations
- Eliminates need for panel undercutting and potting, reducing weight and labor
- Provides localized tensile, shear, and compression strength to sandwich structures
- Prevents moisture incursion to through panel sandwich panel core material
- Improves longevity of attachment points in low strength or soft materials
- Available in stainless steel, aluminum, titanium, and composite materials
- Imperial and metric threadforms in diameters 04-40 to 1/2-20 and from M3 to M10
- Blind, through-hole, and locking thread variants available

Threaded Bushings

Threaded, blind thread, locking thread, and spacer bushings enable localized reinforcement and attachment to panel structure.



Through-Hole Bushings

Through-hole spacer bushings provide localized compressional reinforcement of panel structure. Countersunk versions permit flush screw attachment.

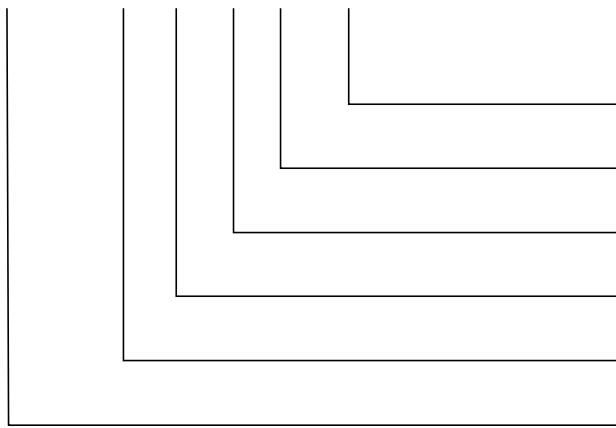


How Our Part Numbers Work

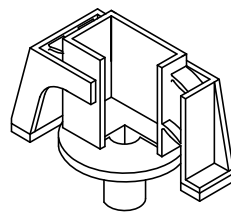
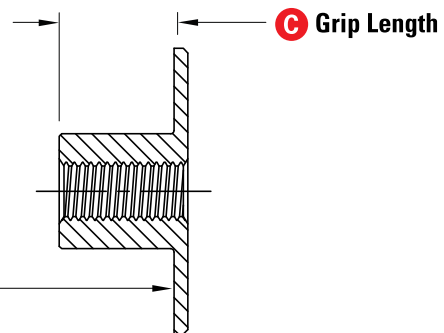
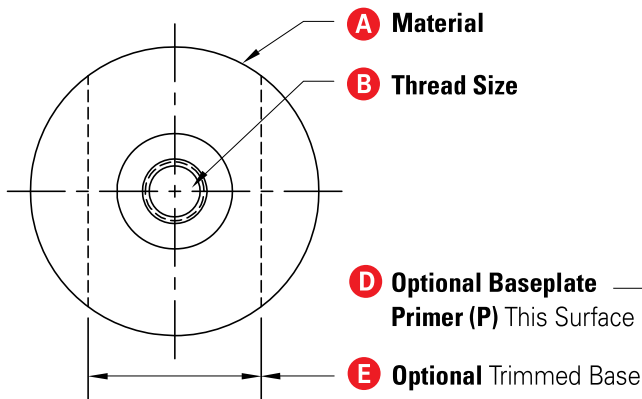
This product guide lists the basic part numbers (for example, CB3005). The full part number is specified by adding further details, such as material and thread codes, to the basic part number. A sample part number is illustrated here as an example. A representative of Click Bond Sales will help you determine the right part number for your application.

Diagramming a Part Number

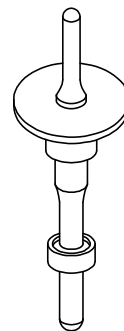
CB3005 CR 3 -12 P 750



- E** Trimmed Base (optional)
 - D** Baseplate Primer (optional)
 - C** Grip Length
 - B** Thread Size
 - A** Material
- Basic Part Number**



S = Standard Fixture



E = Elastic Fixture

How Our Part Tables Work

CB3005		CR		3		12		Fixture Type
Basic Part Number	Material	Thread Size		Grip Length		Baseplate Style & Size		
		Imperial	Metric	Imperial	Metric	Imperial	Metric	
CB3005	A+, CR, CRA, CRM (P)	08, 3, 4, 5, 6, 324, 420, 518, 616	5M, 6M, 8M, 8MC	4, 6, 8, 10, 12, 14, 16, 18, 20, 22, 24	10M, 12M, 15M, 20M, 25M	R = 1.25" Dia. T = 0.75" Width	R = 31,8mm Dia. T = 19,1mm	S

Material Options

A = Aluminum
 A+, AA = Anodized Aluminum
 AC = Aluminum with Chemical Conversion Coating
 CR, CRA, CRM = CRES Passivated
 CV = Invar
 T = Titanium
 V = Glass-Filled PEI
 (P) = Optional Primer Available

Baseplate Styles



R = Round Base T = Trimmed Base

Thread Sizes and Grip Lengths

Fine Thread Sizes			
Imperial		Metric	
Code	Size	Code	Size
04	.1120-40	3M	MJ3 x 0,5
06	.1380-32	4M	MJ4 x 0,7
08	.1640-32	5M	MJ5 x 0,8
3	.1900-32	6M	MJ6 x 1,0
4	.2500-28	8M	MJ8 x 1,25 or 1,0
5	.3125-24	10M	M10 x 1,5
6	.3750-24		

Coarse Thread Sizes			
Imperial		Metric	
Code	Size	Code	Size
324	.1900-24	8MC	M8 x 1,25
420	.2500-20		
518	.3125-18		
616	.3750-16		

Grip Lengths			
Imperial		Metric	
Code	Size	Code	Size
04	.250	10M	10
06	.375	12M	12
08	.500	15M	15
10	.625	20M	20
12	.750	25M	25
14	.875		
16	1.000		
18	1.125		
20	1.250		
22	1.375		
24	1.500		

NOTE: Custom grip lengths available upon request.



Bushings

Threaded Bushings *Product images not to scale.*



CB3005



CB5005



CB5006



CB9060



CB9061



CB9084



CB9085



CB9101



CB9112

Basic Part Number	Material	Thread Size		Grip Length		Baseplate Style & Size		Fixture Type
		Imperial	Metric	Imperial	Metric	Imperial	Metric	
CB3005	A+, CR, CRA, CRM (P)	08, 3, 4, 5, 6, 324, 420, 518, 616	5M, 6M, 8M, 8MC	4, 6, 8, 10, 12, 14, 16, 18, 20, 22, 24	10M, 12M, 15M, 20M, 25M	R = 1.25" Dia. T = 0.75" Width	R = 31,8mm Dia. T = 19,1mm	S
CB5005	A+, CR, CRA, CRM, T (P)	04, 06, 08, 3, 4, 324, 420	3M, 4M, 5M	*0.060" to 0.180" Min.	3M Min.	*R = 0.50" to 1.0" Dia.	*R = 15,9mm to 19,1mm	S
CB5006	A+, CR, CRA, CRM, T (P)	06, 08, 3, 4, 324, 420	3M, 4M, 5M	*0.100" to 0.180" Min.	3M Min.	*R = 0.62" to 1.00" Dia.	*R = 15,9mm to 19,1mm	E
CB9060	A, AA, CR, CRA, T	3, 4, 5, 324, 420, 518	NA	8, 10, 12, 14, 16	NA	R = 1.25" Dia. T = 0.75" Width	NA	S
CB9061	A, AA, CR, T	06, 08, 3, 4, 5, 6, 324, 420	5M, 6M, 8M, 10M	*0.450" to 0.625" Min.	*13,0mm to 18,5mm Min.	*R = 0.62" to 1.25" Dia. T = 0.75" Width	*R = 22,1mm to 31,8mm T = 19,1mm	E
CB9084	A+, CR, CRA (P)	3, 4, 5, 420, 518	5M, 6M, 8M	6, 8, 10, 12, 14, 16	10M, 12M, 15M, 20M, 25M	R = 1.25" Dia. T = 0.75" Width	R = 31,8mm T = 19,1mm	S
CB9085	A+, CR, CRA	08, 3	NA	*0.130" or 0.155" Min.	NA	R = 0.62" Dia.	NA	S, E
CB9101	CR (P)	08, 3, 324	NA	8, 10, 12, 14, 16	NA	R = 0.62" Dia.	NA	S
CB9112	A+, CR, CRA	06, 08, 3	NA	*0.105 to 0.155 Min.	NA	R = 0.62" Dia.	NA	E

*Grip Length Minimum & Baseplate Size vary based on Thread Size

Through-Hole Bushings *Product images not to scale.*



CB5007



CB9029



CB9077



CB9122

Basic Part Number	Material	Fastener / Hole Size		Baseplate Style & Size		Fixture Type
		Imperial	Metric	Imperial	Metric	
CB5007	A+, CR, CRA, CRM, T (P)	0.1410" to 0.2570"	3,1 to 10,1	*R = 0.62" to 1.00" Dia.	*R = 16,0mm to 38,0mm Dia.	E
CB9029	A, AA, AC, CR, CV, T, V	0.145" to 0.390"	3,3 to 10,3	*R = 0.62" to 1.25" Dia.	*R = 15,8mm to 31,8mm Dia.	E
CB9077	A, AA, CR	0.145" to 0.390"	NA	*R = 0.62" to 1.25" Dia.	NA	E
CB9122	A, AA, CR, CRA	0.170"	NA	R = 0.75" Dia.		E

*Baseplate Size varies based on Fastener / Hole Size

Fine Thread Sizes

Imperial		Metric	
Code	Size	Code	Size
04	.1120-40	3M	MJ3 x 0,5
06	.1380-32	4M	MJ4 x 0,7
08	.1640-32	5M	MJ5 x 0,8
3	.1900-32	6M	MJ6 x 1,0
4	.2500-28	8M	MJ8 x 1,25 or 1,0
5	.3125-24	10M	M10 x 1,5
6	.3750-24		

Coarse Thread Sizes

Imperial		Metric	
Code	Size	Code	Size
324	.1900-24	8MC	M8 x 1,25
420	.2500-20		
518	.3125-18		
616	.3750-16		

Grip Lengths

Imperial		Metric	
Code	Size	Code	Size
04	.250	10M	10
06	.375	12M	12
08	.500	15M	15
10	.625	20M	20
12	.750	25M	25
14	.875		
16	1.000		
18	1.125		
20	1.250		
22	1.375		
24	1.500		

NOTE: Custom grip lengths available upon request.

Material

A = Aluminum
 A+, AA = Anodized Aluminum
 AC = Aluminum with Chemical Conversion Coating
 CR, CRA, CRM = CRES Passivated
 CV = Invar
 T = Titanium
 V = Glass-Filled PEI
 (P) = Optional Primer Available

Baseplate Style

R = Round Base
 T = Trimmed Base

Fixture Type

S = Standard
 E = Elastic