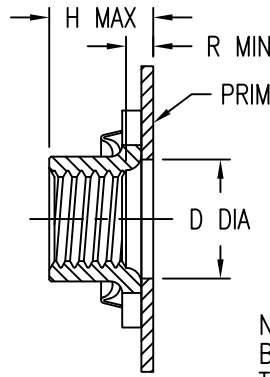


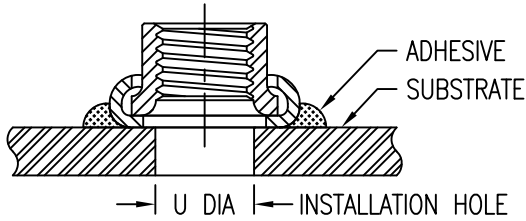
THREAD
 RADIAL FLOAT OF NUT ELEMENT
 .020 MIN FROM CENTER.
 NUT CAN ENGAGE SCREW FROM
 MAX MISALIGNED POSITION.
 THREAD LOCK BY ELLIPTICAL
 DEFORMATION.



PRIMER THIS SURFACE.

NUTPLATE ATTACHED
 BY ADHESIVE APPLIED
 TO THIS SURFACE.

DISPOSABLE ELASTIC
 FIXTURE HOLDS NUTPLATE
 WHILE ADHESIVE CURES.



THREAD AND DIMENSION DATA (ALL DIMENSIONS BEFORE PAINT)

CODE	THREAD SIZE	A MAX	B MAX	D MIN	H MAX	R MIN	U	WEIGHT * (LB/100)	TENSILE STRENGTH (LBS MIN)
04	.112-40 UNC-2B	.651	.315	.152	.153	-	.112-.152	.14	750
06	.138-32 UNC-2B	.682	.357	.178	.171	-	.138-.178	.17	1130
08	.164-32 UNC-2B	.707	.367	.204	.250	.062	.164-.204	.30	1720
3	.190-32 UNF-2B	.739	.416	.230	.250	.062	.190-.230	.36	2460
324	.190-24 UNC-2B								2010
4	.250-28 UNF-2B	.801	.500	.290	.281	.062	.250-.290	.60	4580
420	.250-20 UNC-2B								3760
5	.312-24 UNF-2B	1.010	.600	.352	.334	.062	.312-.352	1.14	7390
518	.312-18 UNC-2B								6360

* APPROXIMATE WEIGHT WITHOUT DISPOSABLE INSTALLATION FIXTURE.

NUT MATERIAL AND FINISH DATA

CODE	MATERIAL	FINISH	LUBRICATION
CR	A-286 CRES	PASSIVATE	DRI-FILM LUBE

BASEPLATE MATERIAL AND FINISH DATA

CODE	MATERIAL	FINISH
CR	A-286 CRES	PASSIVATE

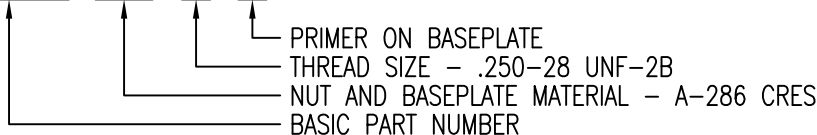
BASEPLATE PRIMER

CODE	MATERIAL
NONE	EPOXY PRIMER
P	

NOTE: "NL" PART NUMBER SUFFIX INDICATES NON-LOCKING NUT ELEMENT.

EXAMPLE PART NUMBER

CN614 CR 4 P



UNLESS OTHERWISE SPECIFIED, ALL DIMENSIONS ARE IN INCHES AND TOLERANCES ARE AS SHOWN BELOW. DIMENSIONAL TOLERANCES AND SYMBOLS PER ANSI Y14.5M-1982.

PROPRIETARY PARTS SHOWN IN THIS DRAWING ARE THE SUBJECT OF ISSUED UNITED STATES AND FOREIGN PATENTS AND PATENTS PENDING. UNAUTHORIZED REPRODUCTION AND/OR DISTRIBUTION OF THIS DRAWING IS SPECIFICALLY PROHIBITED.

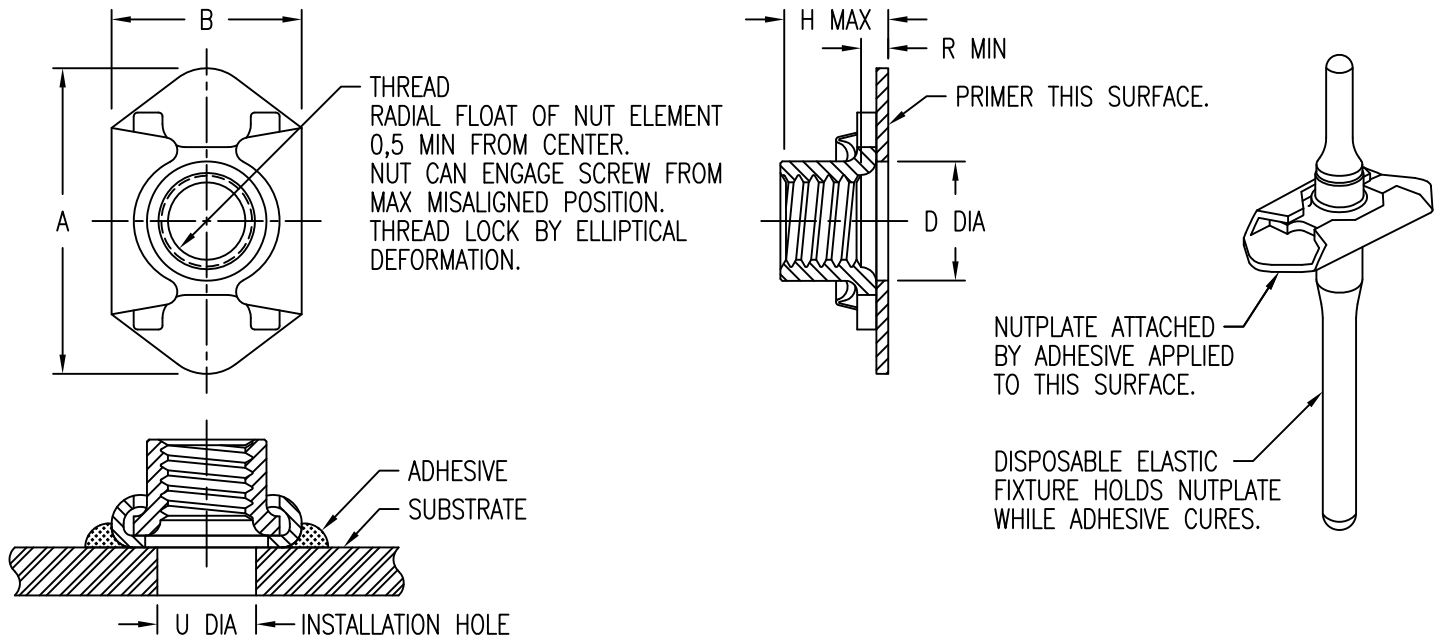


CARSON CITY
 NEVADA 89706

CAD CN614-1

APPROVALS	DATE
DRAWN DAC	28SEP10
CHECKED DAC/mtm	28SEP10
RELEASED GBC/mtm	28SEP10
REVISED DAC	28SEP10

TITLE			
NUTPLATE, MINIATURE, FLOATING			
SIZE	CAGE CODE	DWG. NO.	REV.
A	66530	CN614	6
SCALE	2/1	28SEP10	SHEET 1 OF 2



THREAD AND DIMENSION DATA (ALL DIMENSIONS BEFORE PAINT)

CODE	THREAD SIZE	A MAX	B MAX	D MIN	H MAX	R MIN	U	WEIGHT * (GRAMS)	TENSILE STRENGTH (kN MIN)
4M	M4 X 0,7	18,0	9,4	5,0	5,1	1,3	4,0-5,0	1,4	7,6
5M	M5 X 0,8	18,8	10,6	6,0	6,1	1,3	5,0-6,0	1,6	10,9
6M	M6 X 1,0	20,4	12,7	7,0	6,8	1,3	6,0-7,0	2,8	19,6
8M	M8 X 1,0	25,7	15,3	9,0	8,2	1,3	8,0-9,0	5,2	32,8

* APPROXIMATE WEIGHT WITHOUT DISPOSABLE INSTALLATION FIXTURE.

NUT MATERIAL AND FINISH DATA

CODE	MATERIAL	FINISH	LUBRICATION
CR	A-286 CRES	PASSIVATE	DRI-FILM LUBE

BASEPLATE MATERIAL AND FINISH DATA

CODE	MATERIAL	FINISH
CR	A-286 CRES	PASSIVATE

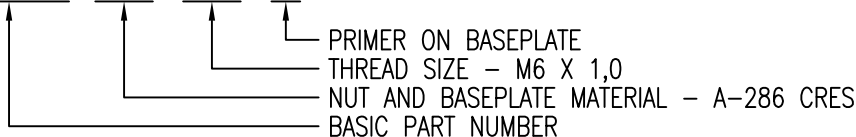
BASEPLATE PRIMER

CODE	MATERIAL
NONE	EPOXY PRIMER
P	

NOTE: "NL" PART NUMBER SUFFIX INDICATES NON-LOCKING NUT ELEMENT.

EXAMPLE PART NUMBER

CN614 CR 6M P



UNLESS OTHERWISE SPECIFIED, ALL DIMENSIONS ARE IN MILLIMETERS AND TOLERANCES ARE AS SHOWN BELOW. DIMENSIONAL TOLERANCES AND SYMBOLS PER ANSI Y14.5M-1982.

PROPRIETARY PARTS SHOWN IN THIS DRAWING ARE THE SUBJECT OF ISSUED UNITED STATES AND FOREIGN PATENTS AND PATENTS PENDING. UNAUTHORIZED REPRODUCTION AND/OR DISTRIBUTION OF THIS DRAWING IS SPECIFICALLY PROHIBITED.

CLICK BOND

CARSON CITY
NEVADA 89706

CAD CN614-2 METRIC DIMENSIONS	
ANGLES	±1°
.X	±0,8
.XX	±0,25

APPROVALS	DATE
DRAWN <i>DAC</i>	28SEP10
CHECKED <i>DAC</i>	28SEP10
RELEASED <i>ABC</i>	28SEP10
REVISED <i>DAC</i>	28SEP10

TITLE NUTPLATE, MINIATURE, FLOATING			
SIZE A	CAGE CODE 66530	DWG. NO. CN614 (METRIC)	REV. 6
SCALE 2/1	28SEP10		SHEET 2 OF 2