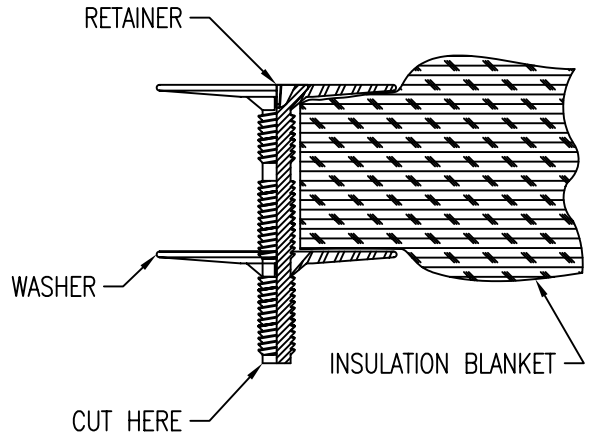
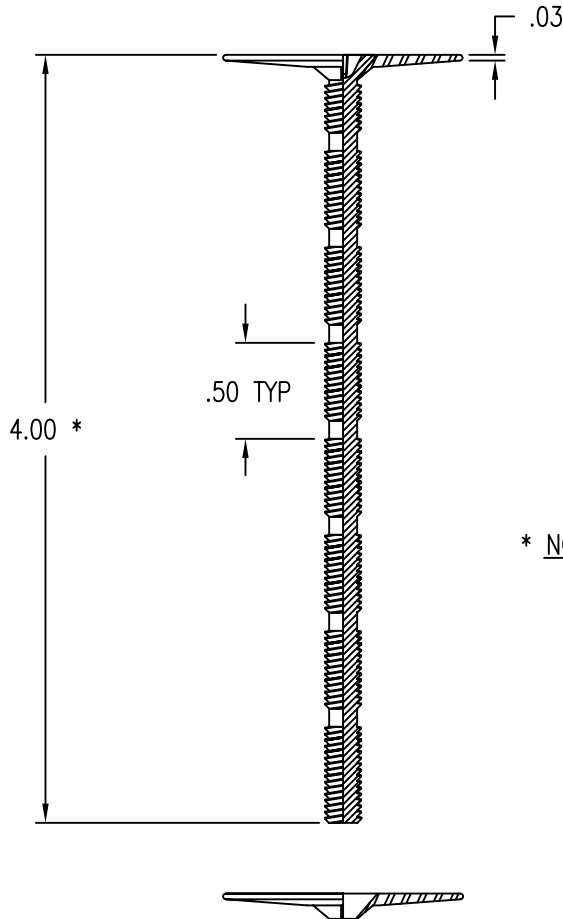


TWO PIECE CONSTRUCTION.
 CAPTIVE SCREW ROTATES IN WASHER.
 (FOR USE WHERE RETAINER IS AFFIXED TO BLANKET)



* NOTE: CUSTOMER WILL INSTALL WASHER ON RETAINER.
 CUSTOMER WILL CUT RETAINER TO DESIRED LENGTH.

EXAMPLE PART NUMBER

CB9208 V 3-64

RETAINER MATERIAL - ULTEM
 THERMOPLASTIC, 350°F

LENGTH IN SIXTEENTHS - 4.00
 THREAD T SIZE - .1900-32 BUTTRESS DOUBLE LEAD
 MATERIAL - ULTEM
 BASIC PART NUMBER

UNLESS OTHERWISE SPECIFIED, ALL DIMENSIONS ARE IN INCHES AND TOLERANCES ARE AS SHOWN BELOW. DIMENSIONAL TOLERANCES AND SYMBOLS PER ANSI Y14.5M-1982.

PROPRIETARY PARTS SHOWN IN THIS DRAWING ARE THE SUBJECT OF ISSUED UNITED STATES AND FOREIGN PATENTS AND PATENTS PENDING. UNAUTHORIZED REPRODUCTION AND/OR DISTRIBUTION OF THIS DRAWING IS SPECIFICALLY PROHIBITED.

GLICK BOND

CARSON CITY
 NEVADA 89706

		APPROVALS		DATE	TITLE			
ANGLES	±1°	DRAWN	BSP	24AUG00	RETAINER, VARIABLE LENGTH, INSULATION BLANKET MOUNT			
.XX	±.03	CHECKED	DAC	24AUG00	SIZE	CAGE CODE	DWG. NO.	REV.
.XXX	±.010	RELEASED	CGH	8SEP00	A	66530	CB9208	1
.XXXX	±.001	REVISED	BSP	24AUG00	SCALE	1/1	24AUG00	SHEET 1 OF 1