

THREAD AND DIMENSION DATA (ALL DIMENSIONS BEFORE PAINT)

PART NUMBER	THREAD SIZE	A MAX	B MAX	C MAX	D MIN	F MAX	H MAX	R MIN	M MIN
CB8010()08()2	.1640-32 UNJC-3B	.995	.580	.637	.204	.800	.325	.125	.168
CB8010()3()2	.1900-32 UNJF-3B	.995	.580	.637	.230	.800	.320	.125	.194
CB8010()3()3				.700			.383	.187	
CB8010()3()4				.762			.445	.250	
CB8010()3()5				.825			.508	.312	
CB8010()3()6				.887			.570	.375	
CB8010()3()7				.950			.633	.437	
CB8010()3()8				1.012			.695	.500	
CB8010()4()2				.2500-28 UNJF-3B			1.100	.725	
CB8010()4()3	.754	.428	.187						
CB8010()4()4	.816	.490	.250						
CB8010()4()5	.879	.553	.312						
CB8010()4()6	.941	.615	.375						
CB8010()4()7	1.004	.678	.437						
CB8010()4()8	1.066	.740	.500						
CB8010()5()2	.3125-24 UNJF-3B	1.200	.807		.785	.353			1.050
CB8010()5()3				.848	.462		.187		
CB8010()5()4				.910	.524		.250		
CB8010()5()5				.973	.586		.312		
CB8010()5()6				1.035	.649		.375		
CB8010()5()7				1.098	.711		.437		
CB8010()5()8				1.160	.774		.500		
CB8010()6()2				.3750-24 UNJF-3B	1.45		.990	.950	
CB8010()7()2	.4375-20 UNJF-3B	1.69	1.11	1.037	.478	1.47	.560	.125	.441
CB8010()8()2	.5000-20 UNJF-3B	1.95	1.24	1.150	.540	1.70	.640	.125	.504

UNLESS OTHERWISE SPECIFIED, ALL DIMENSIONS ARE IN INCHES AND TOLERANCES ARE AS SHOWN BELOW. DIMENSIONAL TOLERANCES AND SYMBOLS PER ANSI Y14.5M-1982.

PROPRIETARY PARTS SHOWN IN THIS DRAWING ARE THE SUBJECT OF ISSUED UNITED STATES AND FOREIGN PATENTS AND PATENTS PENDING. UNAUTHORIZED REPRODUCTION AND/OR DISTRIBUTION OF THIS DRAWING IS SPECIFICALLY PROHIBITED.

CLICK BOND

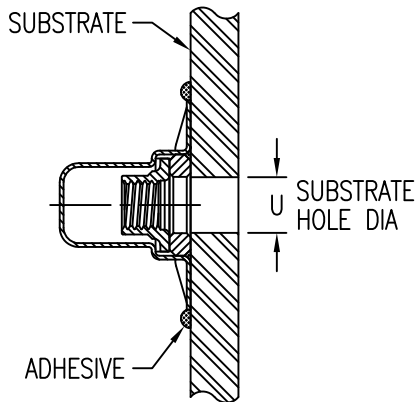
CARSON CITY
NEVADA 89706

CAD CB8010-1

APPROVALS	DATE
DRAWN <i>DAC</i>	12MAR06
CHECKED <i>DAC</i>	13MAR18
RELEASED <i>B Khodnegah</i>	13MAR18
REVISED <i>DAC</i>	13MAR18

TITLE
NUTPLATE, SEALED, TWO LUG

SIZE	CAGE CODE	DWG. NO.	REV.
A	66530	CB8010	2
SCALE	1/1	13MAR18	SHEET 1 OF 2



INSTALLATION HOLE SIZE

THREAD CODE	U MIN	U MAX
08	.164	.204
3	.190	.230
4	.250	.290
5	.312	.353
6	.375	.415
7	.437	.478
8	.500	.540

NUT MATERIAL AND FINISH DATA

CODE	MATERIAL	SPEC.	FINISH	SPEC.	DRI-FILM LUBE
-	A-286 CRES	AMS 5525, 5726, 5731, 5732, 5737	PASSIVATE	AMS 2700	AS5272
CRC			CAD PLATE	AMS-QQ-P-416 TY II, CL 2	

WASHER MATERIAL AND FINISH DATA

CODE	MATERIAL	SPEC.	FINISH	SPEC.
CR	A-286 CRES	AMS 5525, 5726, 5731, 5732, 5737	PASSIVATE	AMS 2700
ACR	2024 OR 6061 ALUMINUM	AMS-QQ-A-200 OR AMS-QQ-A-225	ANODIZE	MIL-A-8625

DOME MATERIAL AND FINISH DATA

CODE	MATERIAL	SPEC.	PASSIVATE
CR	A-286 CRES	AMS 5525	AMS 2700
ACR			

OPTIONAL BASEPLATE PRIMER

CODE	MATERIAL SPEC.
C	CYTEC BR127 PRIMER
P	MIL-PRF-85582

OPTIONAL TOPCOAT

CODE	MATERIAL SPEC.
F	AMS-C-27725 TYPE 2 YELLOW

STRENGTH REQUIREMENTS: NUTPLATE TO MEET THE NASM25027 STRENGTH REQUIREMENTS.

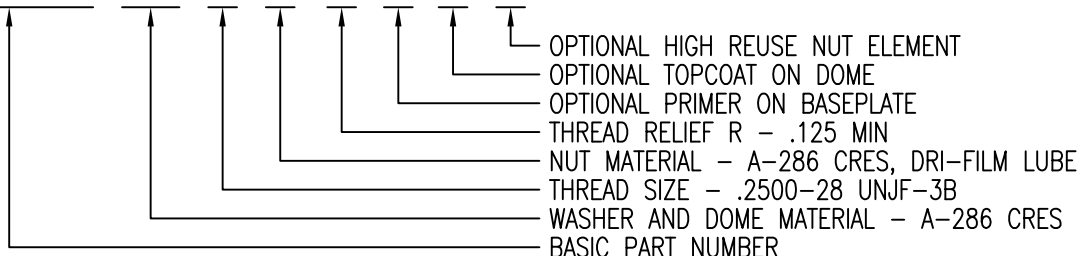
REUSABILITY REQUIREMENTS:

NO SUFFIX - NUT ELEMENT TO MEET THE NASM25027 LOCKING TORQUE REQUIREMENTS FOR 15 REUSE CYCLES.
 "R" SUFFIX - NUT ELEMENT TO MEET THE NASM25027 LOCKING TORQUE REQUIREMENTS FOR 50 REUSE CYCLES.

NOTE: CODE C (CYTEC BR127) OPTIONAL PRIMER REQUIRED ON BONDING SURFACE ONLY.

EXAMPLE PART NUMBER

CB8010 CR 4 - 2 P F R



UNLESS OTHERWISE SPECIFIED, ALL DIMENSIONS ARE IN INCHES AND TOLERANCES ARE AS SHOWN BELOW. DIMENSIONAL TOLERANCES AND SYMBOLS PER ANSI Y14.5M-1982.

PROPRIETARY PARTS SHOWN IN THIS DRAWING ARE THE SUBJECT OF ISSUED UNITED STATES AND FOREIGN PATENTS AND PATENTS PENDING. UNAUTHORIZED REPRODUCTION AND/OR DISTRIBUTION OF THIS DRAWING IS SPECIFICALLY PROHIBITED.

GLICK BOND

CARSON CITY
NEVADA 89706

CAD CB8010-2

APPROVALS	DATE
DRAWN <i>DAC</i>	12MAR06
CHECKED <i>DAC/mtm</i>	13MAR18
RELEASED <i>B Khodnegah</i>	13MAR18
REVISED <i>DAC</i>	13MAR18

TITLE			
NUTPLATE, SEALED, TWO LUG			
SIZE	CAGE CODE	DWG. NO.	REV.
A	66530	CB8010	2
SCALE	1/1 13MAR18		SHEET 2 OF 2