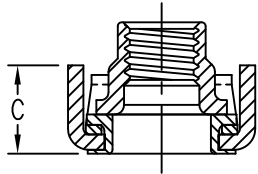
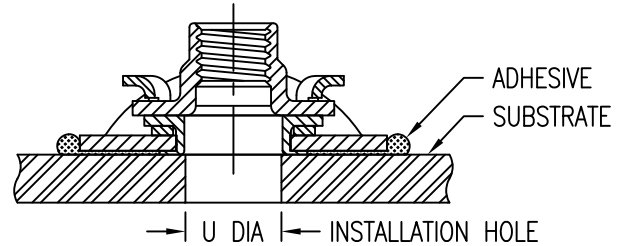


NUTPLATE ATTACHED
BY ADHESIVE APPLIED
TO THIS SURFACE.

DISPOSABLE ELASTIC
FIXTURE HOLDS NUTPLATE
WHILE ADHESIVE CURES.



NUTPLATE MEETS THE STRENGTH
REQUIREMENTS OF NASM25027.



THREAD AND DIMENSION DATA (MINIMUM NUT HEIGHT H LIMITED BY STRENGTH REQUIREMENTS ONLY)

CODE	THREAD SIZE	A MAX	B MAX	C MAX	D DIA	U DIA	NUT HEIGHT AND THREAD RELIEF DIMENSIONS						
							CODE	NONE	2	3	4	5	6
08	.1640-32 UNJC-3B	.948	.525	.35	.250	.164-.224	R ±.025	.120	.165	.228	.291	.354	.417
3	.1900-32 UNJF-3B						H ±.025	.300	.362	.424	.486	.549	.612
4	.2500-28 UNJF-3B	1.292	.610	.45	.310	.250-.312	R ±.025	.150	.235	.298	.361	.424	.488
							H ±.025	.362	.424	.487	.549	.609	.672

MATERIAL AND FINISH DATA

CODE	NUT MATERIAL	SPEC.	RETAINER MATERIAL	SPEC.	PASSIVATE
CR	A-286 CRES	AMS 5525	17-7PH, A-286, 304, 305 CRES	AMS 5528, 5525, 5513, 5514	AMS 2700
CRA	A-286 CRES	AMS 5525	A-286, 304, 305 CRES	AMS 5525, 5513, 5514	AMS 2700

BASEPLATE MATERIAL

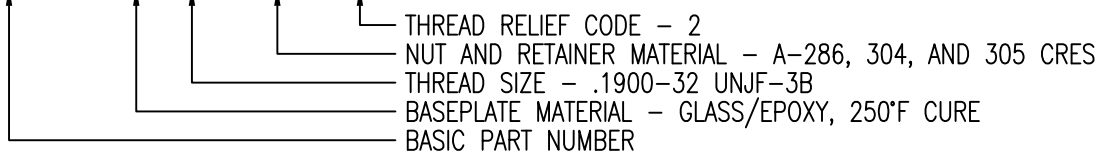
CODE	MATERIAL	SPEC.
C	CARBON/EPOXY, 350°F CURE	CBMS-105
E	GLASS/EPOXY, 350°F CURE	CBMS-106
G	GLASS/EPOXY, 250°F CURE	CBMS-107

NOTES:

- FOR NON-LOCKING NUT ADD "NL" SUFFIX TO PART NUMBER.
- FOR 50 CYCLE REUSE NUT ADD "R" SUFFIX TO PART NUMBER (APPLIES TO SIZES 3 AND 4 ONLY).

EXAMPLE PART NUMBER

CB4009 G 3 CRA 2



UNLESS OTHERWISE SPECIFIED, ALL DIMENSIONS ARE IN INCHES AND TOLERANCES ARE AS SHOWN BELOW. DIMENSIONAL TOLERANCES AND SYMBOLS PER ANSI Y14.5M-1982.

PROPRIETARY PARTS SHOWN IN THIS DRAWING ARE THE SUBJECT OF ISSUED UNITED STATES AND FOREIGN PATENTS AND PATENTS PENDING. UNAUTHORIZED REPRODUCTION AND/OR DISTRIBUTION OF THIS DRAWING IS SPECIFICALLY PROHIBITED.

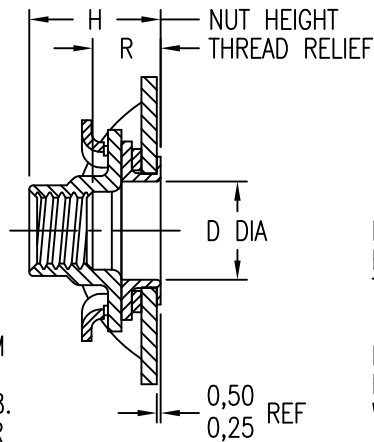
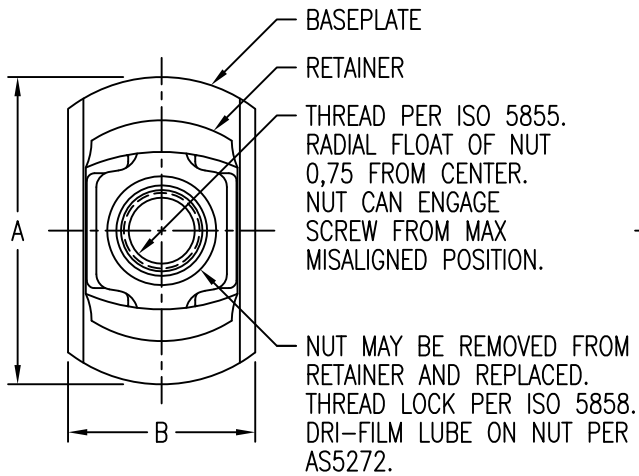
CLICK BOND

CARSON CITY
NEVADA 89706

CAD CB4009-1

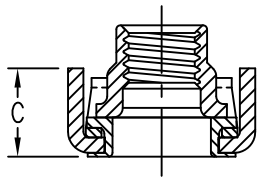
APPROVALS	DATE
DRAWN <i>DAC</i>	3DEC13
CHECKED <i>DAC/mtm</i>	3DEC13
RELEASED <i>ABC/mtm</i>	3DEC13
REVISED <i>DAC</i>	3DEC13

TITLE			
NUTPLATE, TWO LUG, COMPOSITE BASE			
SIZE	CAGE CODE	DWG. NO.	REV.
A	66530	CB4009	15
SCALE	2/1 3DEC13		SHEET 1 OF 2

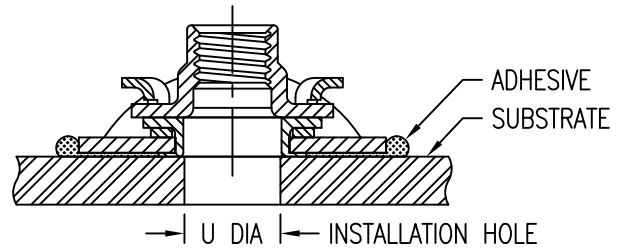


NUTPLATE ATTACHED
BY ADHESIVE APPLIED
TO THIS SURFACE.

DISPOSABLE ELASTIC
FIXTURE HOLDS NUTPLATE
WHILE ADHESIVE CURES.



NUTPLATE MEETS THE STRENGTH
REQUIREMENTS OF ISO 5858 (900 MPa).



THREAD AND DIMENSION DATA (MINIMUM NUT HEIGHT H LIMITED BY STRENGTH REQUIREMENTS ONLY)

CODE	THREAD SIZE	A MAX	B MAX	C MAX	D DIA	U DIA	NUT HEIGHT AND THREAD RELIEF DIMENSIONS						
							CODE	NONE	2	3	4	5	6
4M	MJ4 X 0,7 4H6H	24,1	13,4	8,9	6,35	4,00-5,50	R ±0,65	3,05	4,19	5,79	7,39	8,99	10,59
5M	MJ5 X 0,8 4H6H					5,00-6,35	H ±0,65	7,62	9,19	10,77	12,34	13,94	15,54
6M	MJ6 X 1,0 4H5H	32,9	15,5	11,5	7,87	6,00-7,50	R ±0,65	3,81	5,97	7,57	9,17	10,77	12,40
							H ±0,65	9,19	10,77	12,37	13,94	15,47	17,07

MATERIAL AND FINISH DATA

CODE	NUT MATERIAL	SPEC.	RETAINER MATERIAL	SPEC.	PASSIVATE
CR	A-286 CRES	AMS 5525	17-7PH, A-286, 304, 305 CRES	AMS 5528, 5525, 5513, 5514	AMS 2700
CRA	A-286 CRES	AMS 5525	A-286, 304, 305 CRES	AMS 5525, 5513, 5514	AMS 2700

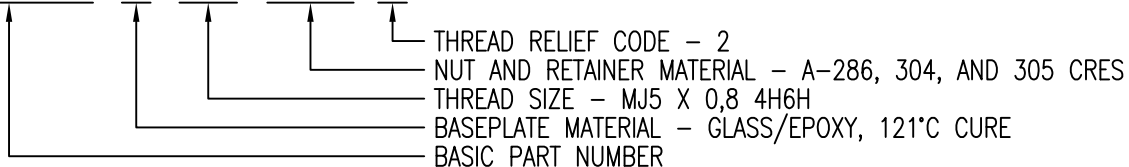
BASEPLATE MATERIAL

CODE	MATERIAL	SPEC.
C	CARBON/EPOXY, 177°C CURE	CBMS-105
E	GLASS/EPOXY, 177°C CURE	CBMS-106
G	GLASS/EPOXY, 121°C CURE	CBMS-107

NOTE: FOR NON-LOCKING NUT ADD "NL" SUFFIX TO PART NUMBER.

EXAMPLE PART NUMBER

CB4009 G 5M CRA 2



UNLESS OTHERWISE SPECIFIED, ALL DIMENSIONS ARE
IN MILLIMETERS AND TOLERANCES ARE AS SHOWN
BELOW. DIMENSIONAL TOLERANCES AND SYMBOLS
PER ANSI Y14.5M-1982.

PROPRIETARY PARTS SHOWN IN THIS DRAWING ARE THE SUBJECT
OF ISSUED UNITED STATES AND FOREIGN PATENTS AND PATENTS
PENDING. UNAUTHORIZED REPRODUCTION AND/OR DISTRIBUTION OF THIS
DRAWING IS SPECIFICALLY PROHIBITED.

CLICK BOND

CARSON CITY
NEVADA 89706

CAD CB4009-2 METRIC DIMENSIONS		APPROVALS		DATE	TITLE			
ANGLES ±1°		DRAWN DAC		3DEC13	NUTPLATE, TWO LUG, COMPOSITE BASE			
.X ±0,8	CHECKED DAC/mtm	RELEASD ABC/ati		3DEC13	SIZE A	CAGE CODE 66530	DWG. NO. CB4009 (METRIC)	REV. 15
.XX ±0,25	REVISED DAC			3DEC13	SCALE 2/1	3DEC13	SHEET 2 OF 2	