

LENGTH L DATA (LENGTH CODE IN SIXTEENTHS OF AN INCH)

CODE	5	6	7	8	9	10	11	12	13	14	15	16	17	18	20	22	24
L	.312	.375	.437	.500	.562	.625	.687	.750	.812	.875	.937	1.000	1.062	1.125	1.250	1.375	1.500
D MIN	.218	.295	.400	.472													

STANDOFF MATERIAL AND FINISH DATA

CODE	MATERIAL	SPEC.	FINISH	SPEC.
A	2024 OR 6061 ALUMINUM	AMS-QQ-A-200, AMS-QQ-A-225, AMS-QQ-A-250	NONE	
AA			ANODIZE	MIL-A-8625
CR	302, 303, 304 OR A-286 CRES	AMS 5513, 5516, 5636, 5637, 5638, 5639, 5640, 5641, 5647 AMS 5525, 5726, 5731, 5732, 5734, 5737 (CHEMISTRY ONLY)	PASSIVATE	AMS 2700
CRA	A-286 CRES	AMS 5525, 5726, 5731, 5732, 5734, 5737 (CHEMISTRY ONLY)	PASSIVATE	AMS 2700
T	6AL-4V TITANIUM	AMS 4911, 4928, 4965, OR 4967	NONE	

THREAD DATA

CODE	THREAD SIZE
06	.1380-32 UNC-3B
08	.1640-32 UNC-3B
3	.1900-32 UNF-3B

MS21209 OR NAS1130 INSERT INSTALLED PER MS33537. DRI-FILM LUBE ON INSERT PER AS5272.

THREAD LOCK PER NASM25027. STANDOFF ACCOMMODATES AS8879 UNJ THREAD SCREW.

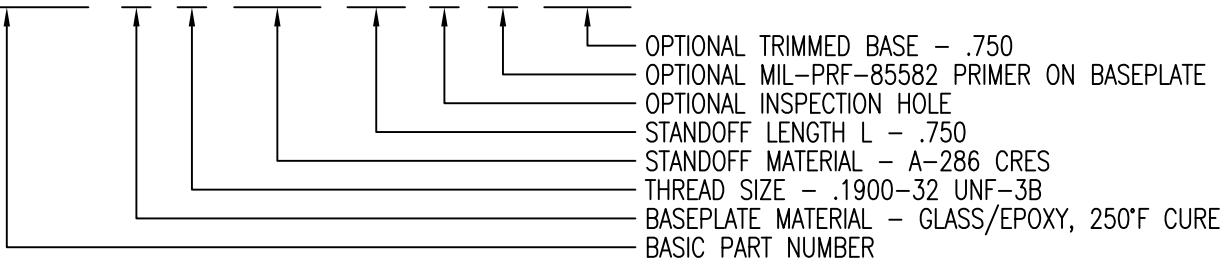
BASEPLATE MATERIAL

CODE	MATERIAL	SPEC.
C	CARBON/EPOXY, 350°F CURE	CBMS-105
E	GLASS/EPOXY, 350°F CURE	CBMS-106
G	GLASS/EPOXY, 250°F CURE	CBMS-107
P	GLASS/PEEK	CBMS-103
U	30% GLASS/PEI	CBMS-102
UC	30% CARBON/PEI	CBMS-109
V	40% GLASS/PEI	CBMS-101
VC	40% CARBON/PEI	CBMS-108

DISPOSABLE PRESSURE SENSITIVE ADHESIVE FIXTURE HOLDS STANDOFF WHILE ADHESIVE CURES.

EXAMPLE PART NUMBER

CB4001 G 3 CRA 12 H P 750



UNLESS OTHERWISE SPECIFIED, ALL DIMENSIONS ARE IN INCHES AND TOLERANCES ARE AS SHOWN BELOW. DIMENSIONAL TOLERANCES AND SYMBOLS PER ANSI Y14.5M-1982.

PROPRIETARY PARTS SHOWN IN THIS DRAWING ARE THE SUBJECT OF ISSUED UNITED STATES AND FOREIGN PATENTS AND PATENTS PENDING. UNAUTHORIZED REPRODUCTION AND/OR DISTRIBUTION OF THIS DRAWING IS SPECIFICALLY PROHIBITED.

**CLICK BOND**

CARSON CITY  
NEVADA 89706

CAD CB4001-1

APPROVALS

DATE

TITLE

ANGLES ±1°

DRAWN DAC

5SEP13

STANDOFF, LOCKING THREAD, COMPOSITE BASE

.XX ±.03

CHECKED DAC

31MAY18

SIZE

CAGE CODE

DWG. NO.

REV.

.XXX ±.010

RELEASED CGH

31MAY18

A

66530

CB4001

29

.XXXX ±.001

REVISED DAC

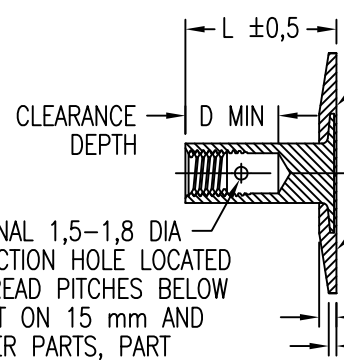
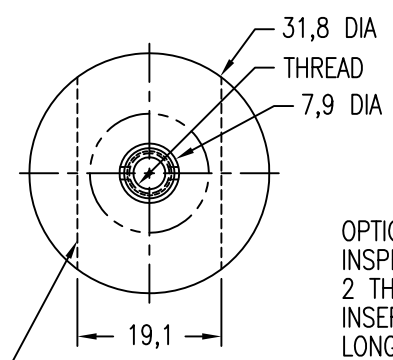
31MAY18

SCALE

1/1

31MAY18

SHEET 1 OF 2

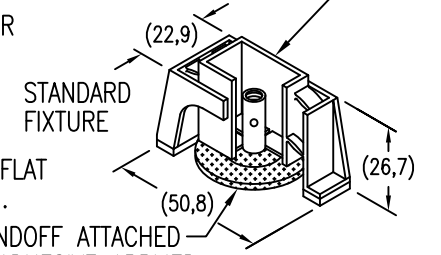


DISPOSABLE PRESSURE SENSITIVE ADHESIVE FIXTURE HOLDS STANDOFF WHILE ADHESIVE CURES.

OPTIONAL PRIMER THIS SURFACE.

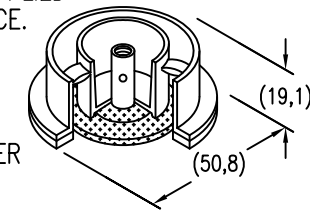
BASE SURFACE FLAT WITHIN 0,25 FIM.

2,8 MAX  
0,4 MIN



STANDOFF ATTACHED BY ADHESIVE APPLIED TO THIS SURFACE.

FOR OPTIONAL ROUND FIXTURE ADD SUFFIX R TO PART NUMBER



FOR OPTIONAL TRIMMED BASE ADD 19 SUFFIX TO PART NUMBER.

OPTIONAL 1,5-1,8 DIA INSPECTION HOLE LOCATED 2 THREAD PITCHES BELOW INSERT ON 15 mm AND LONGER PARTS, PART NUMBER SUFFIX H.

STANDOFF STRAIGHT WITHIN 0,004 mm PER mm OF LENGTH. PITCH DIA CONCENTRIC WITH BASE O.D. WITHIN 0,5 FIM. PITCH DIA PERPENDICULAR TO BASE WITHIN ±1°.

STANDOFF MATERIAL AND FINISH DATA

CODE	MATERIAL	SPEC.	FINISH	SPEC.
A	2024 OR 6061 ALUMINUM	AMS-QQ-A-200, AMS-QQ-A-225, AMS-QQ-A-250	NONE	
AA			ANODIZE	MIL-A-8625
CR	302, 303, 304 OR A-286 CRES	AMS 5513, 5516, 5636, 5637, 5638, 5639, 5640, 5641, 5647 AMS 5525, 5726, 5731, 5732, 5734, 5737 (CHEMISTRY ONLY)	PASSIVATE	AMS 2700
CRA	A-286 CRES	AMS 5525, 5726, 5731, 5732, 5734, 5737 (CHEMISTRY ONLY)	PASSIVATE	AMS 2700
T	6AL-4V TITANIUM	AMS 4911, 4928, 4965, OR 4967	NONE	

LENGTH L DATA (LENGTH CODE IN MILLIMETERS)

CODE	10M	12M	15M	20M	25M	30M	35M
L	10	12	15	20	25	30	35
D MIN	7,50		12,30				

BASEPLATE MATERIAL

CODE	MATERIAL	SPEC.
C	CARBON/EPOXY, 177°C CURE	CBMS-105
E	GLASS/EPOXY, 177°C CURE	CBMS-106
G	GLASS/EPOXY, 121°C CURE	CBMS-107
P	GLASS/PEEK	CBMS-103
U	30% GLASS/PEI	CBMS-102
UC	30% CARBON/PEI	CBMS-109
V	40% GLASS/PEI	CBMS-101
VC	40% CARBON/PEI	CBMS-108

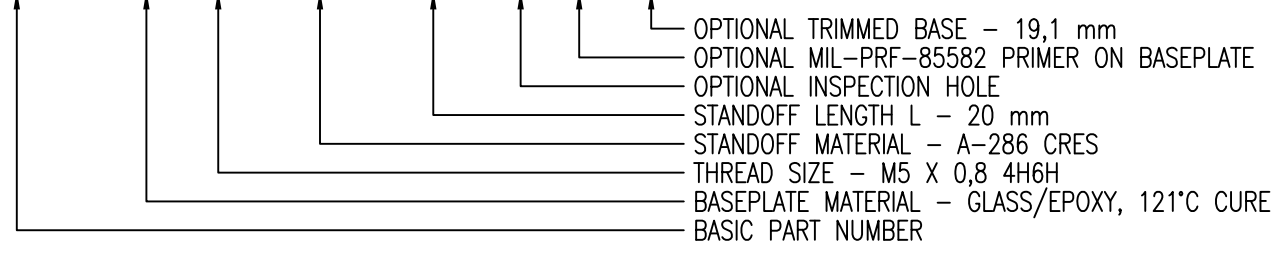
THREAD DATA

CODE	THREAD SIZE
3M	M3 X 0,5 4H5H
4M	M4 X 0,7 4H6H
5M	M5 X 0,8 4H6H

MA3330 OR EQUIVALENT INSERT. INSERT INSTALLED PER MA1567. DRI-FILM LUBE PER AS5272. THREAD LOCK PER ISO 2320. STANDOFF ACCOMMODATES ISO 5855 MJ THREAD SCREW.

EXAMPLE PART NUMBER

CB4001 G 5M CRA 20M H P 19



UNLESS OTHERWISE SPECIFIED, ALL DIMENSIONS ARE IN MILLIMETERS AND TOLERANCES ARE AS SHOWN BELOW. DIMENSIONAL TOLERANCES AND SYMBOLS PER ANSI Y14.5M-1982.

PROPRIETARY PARTS SHOWN IN THIS DRAWING ARE THE SUBJECT OF ISSUED UNITED STATES AND FOREIGN PATENTS AND PATENTS PENDING. UNAUTHORIZED REPRODUCTION AND/OR DISTRIBUTION OF THIS DRAWING IS SPECIFICALLY PROHIBITED.



CARSON CITY NEVADA 89706

CAD CB4001-2 METRIC DIMENSIONS	
ANGLES	±1°
.X	±0,8
.XX	±0,25

APPROVALS	DATE
DRAWN DAC	5SEP13
CHECKED DAC	31MAY18
RELEASED CGH	31MAY18
REVISED DAC	31MAY18

TITLE STANDOFF, LOCKING THREAD, COMPOSITE BASE			
SIZE	CAGE CODE	DWG. NO.	REV.
A	66530	CB4001 (METRIC)	29
SCALE	1/1 31MAY18		SHEET 2 OF 2