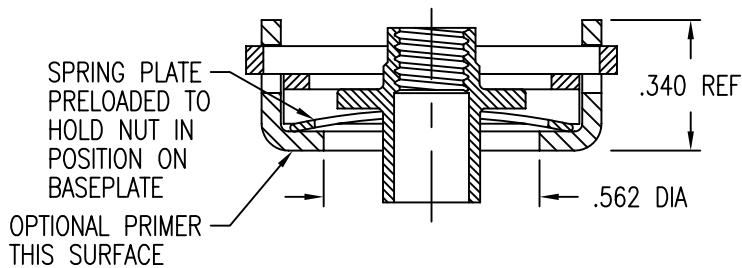


NUTPLATE ATTACHED BY ADHESIVE APPLIED TO THIS SURFACE.

DISPOSABLE ELASTIC FIXTURE HOLDS NUTPLATE WHILE ADHESIVE CURES.

THREAD LOCK BY ELLIPTICAL DEFORMATION PER NASM25027.

NUT MAY BE REMOVED FROM RETAINER AND REPLACED.



NUTPLATE MEETS THE STRENGTH REQUIREMENTS OF NAS1803.

TENSILE STRENGTH OF NUT ASSEMBLY IS 700 LBS MIN.

NUT ELEMENT TENSILE STRENGTH PER NASM25027.

TORQUE OUT REQUIREMENTS OF NASM25027 ARE NOT APPLICABLE.

MATERIAL AND FINISH DATA

CODE	BASEPLATE AND RETAINER MATERIAL	SPEC.	HEAT TREAT	PASSIVATE
CR	A-286 CRES	AMS 5525	130 KSI MIN	AMS-QQ-P-35

NUT - A-286 CRES PER AMS 5731, 5732 OR 5737. PASSIVATE PER AMS-QQ-P-35. DRI-FILM LUBE PER MIL-PRF-46010.

CLIP - 302 OR 18-2MN CRES PER AMS 5688 OR ARMCO SPEC. PASSIVATE PER AMS-QQ-P-35.

SPRING - 301 OR 17-7 PH CRES. PASSIVATE PER AMS-QQ-P-35.

OPTIONAL BASEPLATE PRIMER

CODE	PRIMER	SPEC.
P	EPOXY PRIMER	MIL-PRF-85582

EXAMPLE PART NUMBER

CB9595 CR 3 CR 135 P

OPTIONAL PRIMER ON BASEPLATE  
NOMINAL STRUCTURE THICKNESS S - .135  
NUT MATERIAL - A-286 CRES  
THREAD T SIZE - .1900-32 UNJF-3B  
BASEPLATE MATERIAL - A-286 CRES  
BASIC PART NUMBER

UNLESS OTHERWISE SPECIFIED, ALL DIMENSIONS ARE IN INCHES AND TOLERANCES ARE AS SHOWN BELOW. DIMENSIONAL TOLERANCES AND SYMBOLS PER ANSI Y14.5M-1982.

PROPRIETARY PARTS SHOWN IN THIS DRAWING ARE THE SUBJECT OF ISSUED UNITED STATES AND FOREIGN PATENTS AND PATENTS PENDING. UNAUTHORIZED REPRODUCTION AND/OR DISTRIBUTION OF THIS DRAWING IS SPECIFICALLY PROHIBITED.

**GLICK BOND**

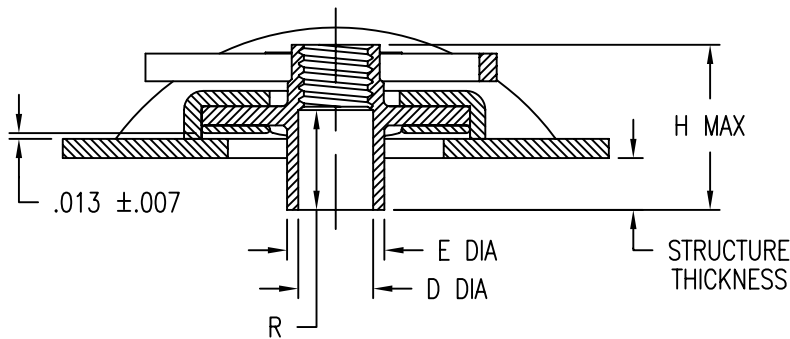
CARSON CITY  
NEVADA 89706

CAD CB9595-1

APPROVALS	DATE
DRAWN PMM	27APR05
CHECKED <i>JOC/mtm</i>	27APR05
RELEASED <i>JBC/ati</i>	27APR05
REVISED PMM	27APR05

TITLE			
NUTPLATE, EXTENDED FLOAT			
SIZE	CAGE CODE	DWG. NO.	REV.
A	66530	CB9595	2
SCALE	2/1		27APR05
SHEET 1 OF 2			

DIMENSIONS WITH SPRING PLATE LOADED TO 25 ±3 LBS.



THREAD AND DIMENSION DATA (ALL DIMENSIONS BEFORE PAINT)

CODE	THREAD T SIZE	RADIAL FLOAT F MIN	D $\begin{smallmatrix} +.005 \\ -.000 \end{smallmatrix}$	E $\begin{smallmatrix} +.005 \\ -.000 \end{smallmatrix}$	FOR STRUCTURE THICKNESS	$\begin{smallmatrix} +.004 \\ -.005 \end{smallmatrix}$	R $\pm .005$	H MAX
035	.1900-32 UNJF-3B	.15	.195	.250	.035		.173	.313
045					.045	.183	.323	
055					.055	.193	.333	
065					.065	.203	.343	
075					.075	.213	.353	
085					.085	.223	.363	
095					.095	.233	.373	
105					.105	.243	.383	
115					.115	.253	.393	
125					.125	.263	.403	
135					.135	.273	.413	
035	.2500-28 UNJF-3B	.10	.265	.340	.035		.173	.313
045					.045	.183	.323	
055					.055	.193	.333	
065					.065	.203	.343	
075					.075	.213	.353	
085					.085	.223	.363	
095					.095	.233	.373	
105					.105	.243	.383	
115					.115	.253	.393	
125					.125	.263	.403	
135					.135	.273	.413	
145	.145	.283	.423					
155	.155	.293	.433					

UNLESS OTHERWISE SPECIFIED, ALL DIMENSIONS ARE IN INCHES AND TOLERANCES ARE AS SHOWN BELOW. DIMENSIONAL TOLERANCES AND SYMBOLS PER ANSI Y14.5M-1982.

PROPRIETARY PARTS SHOWN IN THIS DRAWING ARE THE SUBJECT OF ISSUED UNITED STATES AND FOREIGN PATENTS AND PATENTS PENDING. UNAUTHORIZED REPRODUCTION AND/OR DISTRIBUTION OF THIS DRAWING IS SPECIFICALLY PROHIBITED.

**GLICK BOND**

CARSON CITY  
NEVADA 89706

CAD CB9595-2

APPROVALS	DATE
DRAWN PMM	27APR05
CHECKED <i>DOC/John</i>	27APR05
RELEASED <i>ABC/John</i>	27APR05
REVISED PMM	27APR05

TITLE			
NUTPLATE, EXTENDED FLOAT			
SIZE	CAGE CODE	DWG. NO.	REV.
A	66530	CB9595	2
SCALE	2/1		27APR05
SHEET 2		OF 2	