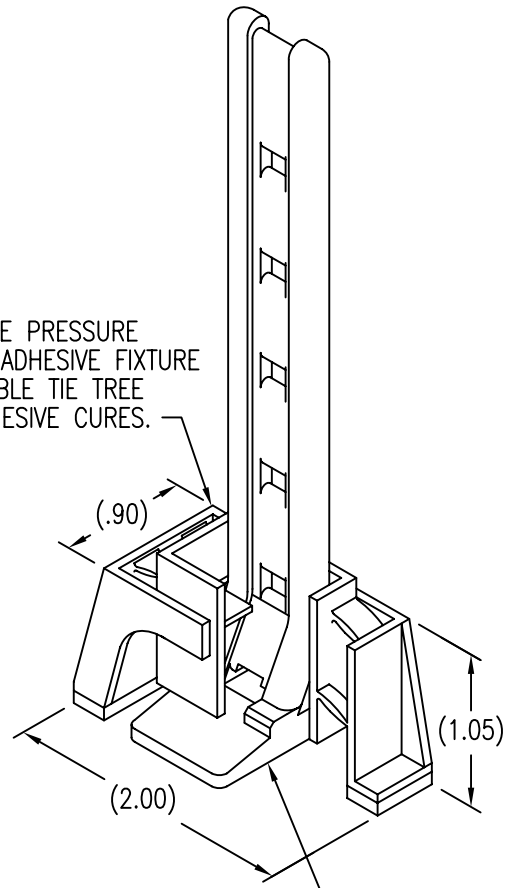


DISPOSABLE PRESSURE SENSITIVE ADHESIVE FIXTURE HOLDS CABLE TIE TREE WHILE ADHESIVE CURES.



CABLE TIE TREE ATTACHED BY ADHESIVE APPLIED TO THIS SURFACE.

MATERIAL DATA

CODE	MATERIAL	FINISH
V	GLASS/PEI, 40% GLASS	ABRASIVE CLEAN
VC	CARBON/PEI, 20% CARBON	ABRASIVE CLEAN

LENGTH DATA

CODE	L	NUMBER OF CABLE TIE MOUNTING LOCATIONS
1	1.02	1
2	1.75	2
3	2.48	3
4	3.21	4
5	3.94	5
NONE	4.68	6

EXAMPLE PART NUMBER

CB9257 V 3

↑ LENGTH CODE L - 2.480 (3 MOUNTING LOCATIONS)
 ↑ MATERIAL - GLASS/PEI
 ↑ BASIC PART NUMBER

UNLESS OTHERWISE SPECIFIED, ALL DIMENSIONS ARE IN INCHES AND TOLERANCES ARE AS SHOWN BELOW. DIMENSIONAL TOLERANCES AND SYMBOLS PER ANSI Y14.5M-1982.

PROPRIETARY PARTS SHOWN IN THIS DRAWING ARE THE SUBJECT OF ISSUED UNITED STATES AND FOREIGN PATENTS AND PATENTS PENDING. UNAUTHORIZED REPRODUCTION AND/OR DISTRIBUTION OF THIS DRAWING IS SPECIFICALLY PROHIBITED.

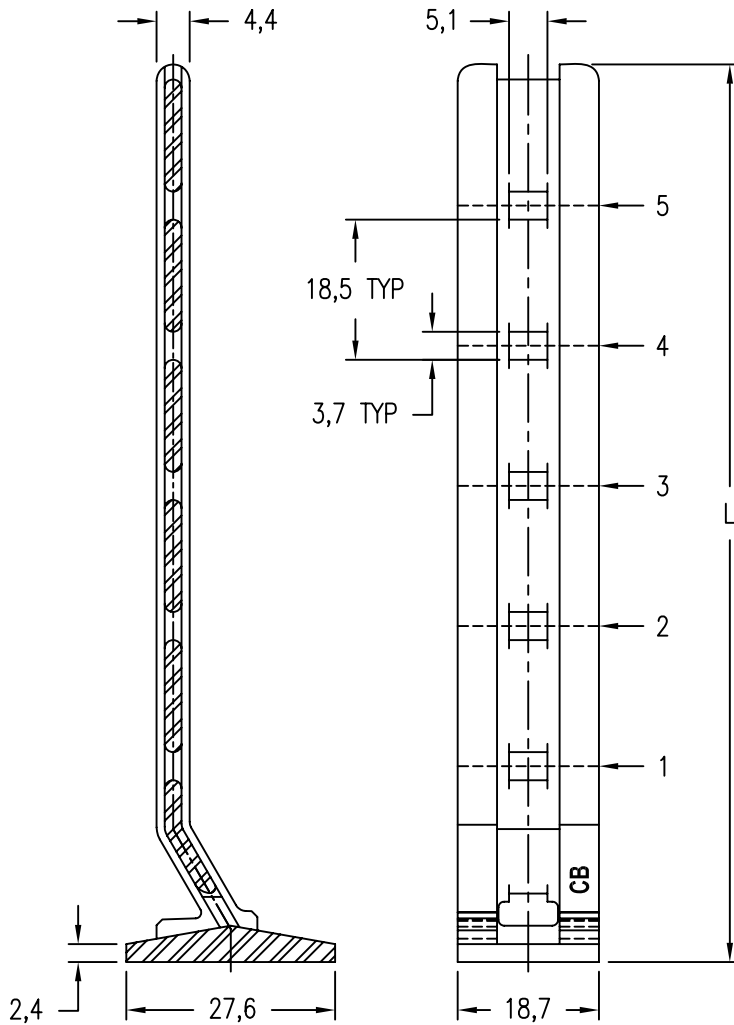
CLICK BOND

CARSON CITY
NEVADA 89706

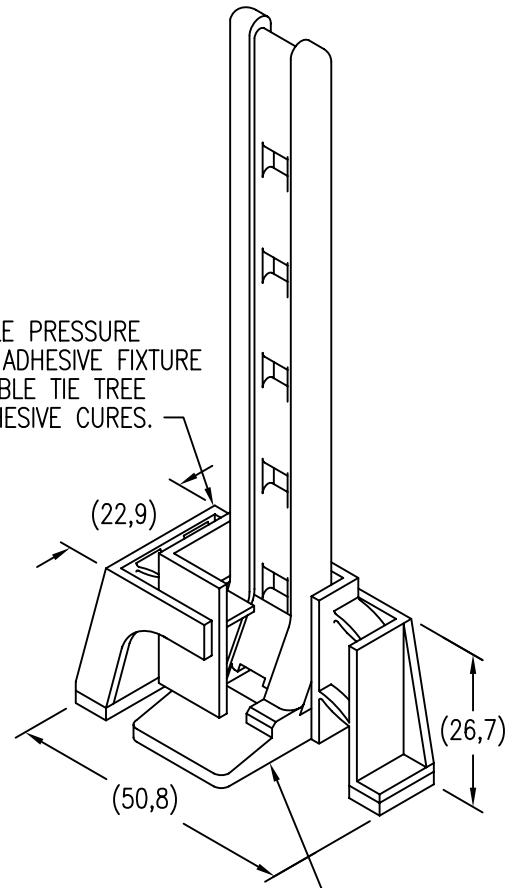
CAD CB9257-1	
ANGLES	±1°
.XX	±.03
.XXX	±.010
.XXXX	±.001

APPROVALS	DATE
DRAWN RJT	23FEB10
CHECKED <i>JAC/mtm</i>	23FEB10
RELEASED <i>CGH</i>	23FEB10
REVISED RJT	23FEB10

TITLE CABLE TIE TREE			
SIZE A	CAGE CODE 66530	DWG. NO. CB9257	REV. 3
SCALE 1/1	23FEB10		SHEET 1 OF 2



DISPOSABLE PRESSURE SENSITIVE ADHESIVE FIXTURE HOLDS CABLE TIE TREE WHILE ADHESIVE CURES.



CABLE TIE TREE ATTACHED BY ADHESIVE APPLIED TO THIS SURFACE.

MATERIAL DATA

CODE	MATERIAL	FINISH
V	GLASS/PEI, 40% GLASS	ABRASIVE CLEAN
VC	CARBON/PEI, 20% CARBON	ABRASIVE CLEAN

LENGTH DATA

CODE	L	NUMBER OF CABLE TIE MOUNTING LOCATIONS
1	25,9	1
2	44,5	2
3	63,0	3
4	81,5	4
5	100,1	5
NONE	118,9	6

EXAMPLE PART NUMBER

CB9257 V 3

LENGTH CODE L - 63,0 (3 MOUNTING LOCATIONS)
 MATERIAL - GLASS/PEI
 BASIC PART NUMBER

UNLESS OTHERWISE SPECIFIED, ALL DIMENSIONS ARE IN MILLIMETERS AND TOLERANCES ARE AS SHOWN BELOW. DIMENSIONAL TOLERANCES AND SYMBOLS PER ANSI Y14.5M-1982.

PROPRIETARY PARTS SHOWN IN THIS DRAWING ARE THE SUBJECT OF ISSUED UNITED STATES AND FOREIGN PATENTS AND PATENTS PENDING. UNAUTHORIZED REPRODUCTION AND/OR DISTRIBUTION OF THIS DRAWING IS SPECIFICALLY PROHIBITED.

CLICK BOND

CARSON CITY
NEVADA 89706

CAD CB9257-2
METRIC DIMENSIONS

APPROVALS	DATE
DRAWN RJT	23FEB10
CHECKED <i>[Signature]</i>	23FEB10
RELEASED <i>[Signature]</i>	23FEB10
REVISED RJT	23FEB10

TITLE
CABLE TIE TREE

ANGLES	±1°
.X	±0,8
.XX	±0,25

SIZE	CAGE CODE	DWG. NO.	REV.
A	66530	CB9257 (METRIC)	3
SCALE	1/1 23FEB10		SHEET 2 OF 2