

ALL DIMENSIONS BEFORE PAINT.

NUTPLATE MEETS THE STRENGTH REQUIREMENTS OF NASM25027.

MATERIAL AND FINISH DATA

CODE	NUT MATERIAL	SPEC.	FINISH	SPEC.	DRI-FILM LUBE
CR	A-286 CRES	AMS 5525, 5726, 5731, 5732, 5737	PASSIVATE	AMS-QQ-P-35	MIL-PRF-46010
CRC			CAD PLATE	AMS-QQ-P-416 TY II, CL 2	

CODE	WASHER MATERIAL	SPEC.	FINISH	SPEC.
CR	A-286 CRES	AMS 5525, 5726, 5731, 5732, 5737	PASSIVATE	AMS-QQ-P-35
ACR	2024 OR 6061 ALUMINUM	AMS-QQ-A-200 OR AMS-QQ-A-225	ANODIZE	MIL-A-8625

INSTALLATION HOLE SIZE

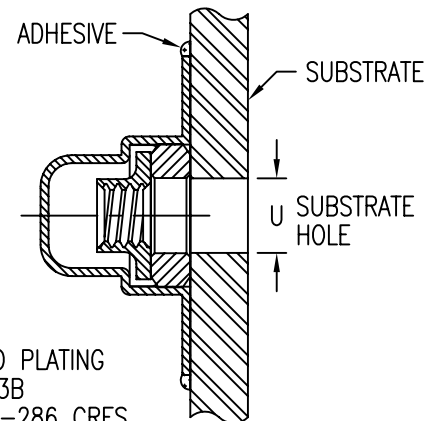
THD SIZE CODE	U MAX
08	.194

OPTIONAL PRIMER

CODE	BASEPLATE PRIMER	SPEC.
P	EPOXY PRIMER	MIL-PRF-85582

OPTIONAL TOPCOAT

CODE	SPEC.
F	AMS-C-27725, TYPE 2



EXAMPLE PART NUMBER

CB9176 CR 08 CR P F

OPTIONAL TOPCOAT ON DOME  
 OPTIONAL PRIMER ON BASEPLATE  
 NUT MATERIAL - A-286 CRES, NO PLATING  
 THREAD SIZE - .1640-32 UNJC-3B  
 DOME AND WASHER MATERIAL - A-286 CRES  
 BASIC PART NUMBER

UNLESS OTHERWISE SPECIFIED, ALL DIMENSIONS ARE IN INCHES AND TOLERANCES ARE AS SHOWN BELOW. DIMENSIONAL TOLERANCES AND SYMBOLS PER ANSI Y14.5M-1982.

PROPRIETARY PARTS SHOWN IN THIS DRAWING ARE THE SUBJECT OF ISSUED UNITED STATES AND FOREIGN PATENTS AND PATENTS PENDING. UNAUTHORIZED REPRODUCTION AND/OR DISTRIBUTION OF THIS DRAWING IS SPECIFICALLY PROHIBITED.

**GLICK BOND**

CARSON CITY  
 NEVADA 89706

APPROVALS		DATE	TITLE				
ANGLES	±1°	DRAWN <b>BPEREZ</b>	23AUG04	NUTPLATE, MINIATURE, FLOATING, SEALED, TWO LUG			
.XX	±.03	CHECKED <b>DOC</b>	25AUG04	SIZE	CAGE CODE	DWG. NO.	REV.
.XXX	±.010	RELEASED <b>CGH</b>	25AUG04	A	66530	CB9176	1
.XXXX	±.001	REVISED <b>BPEREZ</b>	23AUG04	SCALE	2/1	23AUG04	SHEET 1 OF 1