

THREAD AND DIMENSION DATA (ALL DIMENSIONS BEFORE PAINT)

PART NUMBER	THREAD SIZE T	A MAX	B MAX	D MIN	J ±.002	H MAX	R MIN	ULTIMATE TENSILE STRENGTH (LBS)
CB9099CR3P	.1900-32 UNJF-3B	.948	.560	.312	.750	.299	.125	2460
CB9099CR4P	.2500-28 UNJF-3B	.948	.560	.375	.750	.295	.060	3200
CB9099CR4P2						.357	.125	
CB9099CR4P3						.419	.188	

NUT MATERIAL AND FINISH DATA

CODE	MATERIAL	SPEC.	PASSIVATE	DRI-FILM LUBE
CR	A-286 CRES OR INCONEL 718	AMS 5525, 5662, 5664, 5726, AMS 5731, 5732, 5734, OR 5737	AMS-QQ-P-35	MIL-PRF-46010

ADD SUFFIX TO PART NUMBER FOR CORNER NUTPLATE

BASEPLATE MATERIAL AND FINISH DATA

CODE	MATERIAL	SPEC.	PASSIVATE
CR	A-286 CRES	AMS 5525	AMS-QQ-P-35

CLIP MATERIAL: 302 CRES PER AMS 5688 OR 5866, OR ARMC0 18-2MN CRES.

CLIP FINISH: PASSIVATE PER AMS-QQ-P-35.

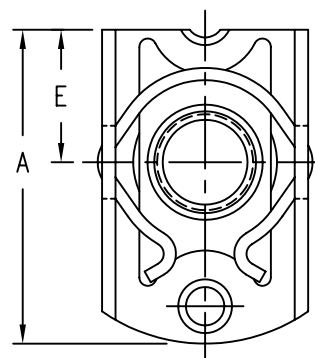
EXAMPLE PART NUMBER

CB9099 CR 4 P 2-350

CORNER NUTPLATE DIMENSIONS

SIZE	CODE	A MAX	E
3	375	.854	.375 ±.005
4	350	.829	.350 MAX

PUSHOUT AND TORQUE OUT REQUIREMENTS PER NASM25027. THREAD LOCK REQUIREMENTS PER NASM25027.



OPTIONAL CORNER NUTPLATE BASEPLATE CODE  
 NUTPLATE C'BORE DASH NO. CODE  
 OPTIONAL EPOXY BASEPLATE PRIMER PER MIL-PRF-85582  
 THREAD SIZE - .2500-28 UNJF-3B  
 NUT AND BASEPLATE MATERIAL - A-286 CRES OR INCONEL  
 BASIC PART NUMBER

UNLESS OTHERWISE SPECIFIED, ALL DIMENSIONS ARE IN INCHES AND TOLERANCES ARE AS SHOWN BELOW. DIMENSIONAL TOLERANCES AND SYMBOLS PER ANSI Y14.5M-1982.

PROPRIETARY PARTS SHOWN IN THIS DRAWING ARE THE SUBJECT OF ISSUED UNITED STATES AND FOREIGN PATENTS AND PATENTS PENDING. UNAUTHORIZED REPRODUCTION AND/OR DISTRIBUTION OF THIS DRAWING IS SPECIFICALLY PROHIBITED.



CARSON CITY NEVADA 89706

3D0269  
3D0339

APPROVALS	DATE
DRAWN DAC	4MAR05
CHECKED <i>[Signature]</i>	4MAR05
RELEASED CGH	4MAR05
REVISED DAC	4MAR05

TITLE NUTPLATE, TWO LUG, EXTENDED FLOAT

SIZE	CAGE CODE	DWG. NO.	REV.
A	66530	CB9099	12

SCALE 2/1 4MAR05 SHEET 1 OF 1