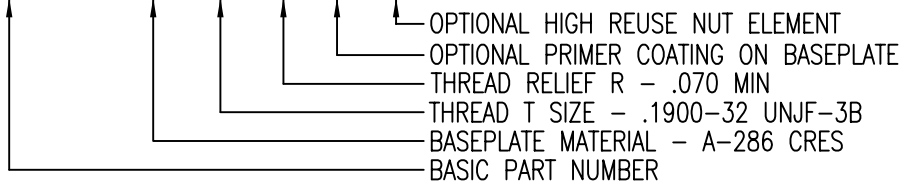


PART NUMBER	THREAD T	A MAX	B MAX	D MIN	E MAX	H MAX	R MIN
CB8011 ( ) 08-1	.1640-32 UNJC-3B	.745	.454	.224	.285	.250	.070
CB8011 ( ) 3-1	.1900-32 UNJF-3B	.745	.454	.250	.285	.250	.070
CB8011 ( ) 3-2						.312	.125
CB8011 ( ) 3-3						.375	.188
CB8011 ( ) 3-4						.438	.250
CB8011 ( ) 3-5						.502	.313
CB8011 ( ) 3-6						.564	.375
CB8011 ( ) 4-1	.2500-28 UNJF-3B	.948	.554	.312	.360	.295	.070
CB8011 ( ) 4-2						.357	.125
CB8011 ( ) 4-3						.419	.188
CB8011 ( ) 4-4						.481	.250
CB8011 ( ) 4-5						.543	.313
CB8011 ( ) 4-6						.605	.375
CB8011 ( ) 5-1	.3125-24 UNJF-3B	1.042	.650	.375	.410	.338	.070
CB8011 ( ) 5-2						.394	.125
CB8011 ( ) 5-3						.455	.188
CB8011 ( ) 5-4						.524	.250
CB8011 ( ) 5-5						.586	.313
CB8011 ( ) 5-6						.649	.375
CB8011 ( ) 6-1	.3750-24 UNJF-3B	1.182	.750	.437	.460	.375	.070
CB8011 ( ) 6-2						.425	.125

EXAMPLE PART NUMBER

CB8011 CR 3-1 P R



UNLESS OTHERWISE SPECIFIED, ALL DIMENSIONS ARE IN INCHES AND TOLERANCES ARE AS SHOWN BELOW. DIMENSIONAL TOLERANCES AND SYMBOLS PER ANSI Y14.5M-1982.

PROPRIETARY PARTS SHOWN IN THIS DRAWING ARE THE SUBJECT OF ISSUED UNITED STATES AND FOREIGN PATENTS AND PATENTS PENDING. UNAUTHORIZED REPRODUCTION AND/OR DISTRIBUTION OF THIS DRAWING IS SPECIFICALLY PROHIBITED.

**GLICK BOND**

CARSON CITY  
NEVADA 89706

CAD CB8011-1

APPROVALS

DATE

TITLE

NUTPLATE, ONE LUG, BONDED

ANGLES ±1°

DRAWN MG

7NOV97

SIZE

CAGE CODE

DWG. NO.

REV.

.XX ±.03

CHECKED DAC

7NOV97

A

66530

CB8011

4

.XXX ±.010

RELEASED CGH

26NOV97

SCALE 2/1

5NOV97

SHEET 1 OF 2

.XXXX ±.001

REVISED MG

7NOV97

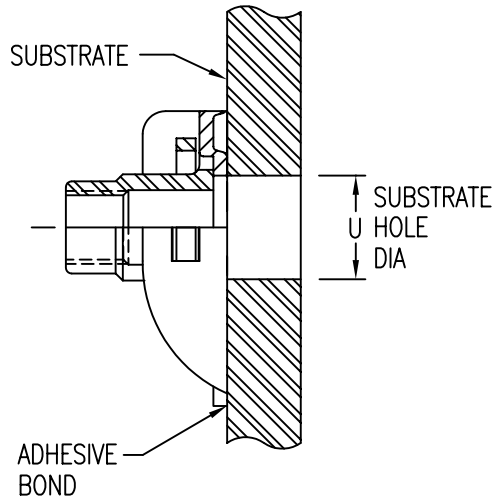


TABLE 2 INSTALLATION HOLE SIZE AND REPLACEMENT COMPONENT PART NUMBERS

THD SIZE CODE	U MAX	NUT PART NO *	CLIP PART NO
08	.224	CB8001CR08-1 ( )	CB8002-3
3	.250	CB8001CR3-( ) ( )	
4	.312	CB8001CR4-( ) ( )	CB8002-4
5	.375	CB8001CR5-( ) ( )	CB8002-5
6	.437	CB8001CR6-( ) ( )	CB8002-6

\* ( ) FIRST DASH NUMBER SAME AS NUTPLATE THREAD RELIEF CODE.

( ) SECOND DASH NUMBER: NO CODE - 15 REUSE CYCLES.  
"R" CODE - 50 REUSE CYCLES.

BASEPLATE MATERIAL AND FINISH DATA

CODE	MATERIAL	SPECIFICATION	FINISH	SPECIFICATION
A	ALUMINUM	QQ-A-250	NONE	
AA	ALUMINUM	QQ-A-250	ANODIZE	MIL-A-8625, TY 1
CR	A-286 CRES	AMS 5525	PASSIVATE	QQ-P-35

MATERIAL & FINISH: NUT ELEMENT: SEE CB8001  
CLIP: SEE CB8002

OPTIONAL PRIMER COATING ON BASEPLATE: EPOXY PRIMER PER MIL-P-85582.

ADDITIONAL REQUIREMENTS:

NO SUFFIX (STANDARD NUT ELEMENT) THREAD LOCK FEATURE TO MAINTAIN LOCKING TORQUE VALUES SPECIFIED IN MIL-N-25027 FOR A MINIMUM OF 15 REUSE CYCLES.

"R" SUFFIX (HIGH REUSE NUT ELEMENT) THREAD LOCK FEATURE TO MAINTAIN LOCKING TORQUE VALUES SPECIFIED IN MIL-N-25027 FOR A MINIMUM OF 50 REUSE CYCLES.

NOTE: 1. CB8011( )2-1 PART NUMBER IS INACTIVE FOR NEW DESIGN.  
CB8011( )08-1 HAS REPLACED CB8011( )2-1  
(PART NUMBER CHANGE ONLY, NUTPLATE DESIGN HAS NOT CHANGED).

UNLESS OTHERWISE SPECIFIED, ALL DIMENSIONS ARE IN INCHES AND TOLERANCES ARE AS SHOWN BELOW. DIMENSIONAL TOLERANCES AND SYMBOLS PER ANSI Y14.5M-1982.

PROPRIETARY PARTS SHOWN IN THIS DRAWING ARE THE SUBJECT OF ISSUED UNITED STATES AND FOREIGN PATENTS AND PATENTS PENDING. UNAUTHORIZED REPRODUCTION AND/OR DISTRIBUTION OF THIS DRAWING IS SPECIFICALLY PROHIBITED.

**GLICK BOND**

CARSON CITY  
NEVADA 89706

CAD CB8011-2

APPROVALS

DATE

TITLE

NUTPLATE, ONE LUG, BONDED

ANGLES ±1°

DRAWN MGV 7NOV97

SIZE

CAGE CODE

DWG. NO.

REV.

.XX ±.03

CHECKED DAC 7NOV97

A

66530

CB8011

4

.XXX ±.010

RELEASED CGH 26NOV97

SCALE

2/1

7NOV97

SHEET 2 OF 2

.XXXX ±.001

REVISED MGV 7NOV97