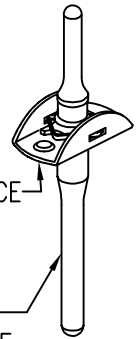


NUTPLATE MEETS THE STRENGTH REQUIREMENTS OF MIL-N-25027

NUTPLATE ATTACHED BY MEANS OF ADHESIVE APPLIED TO THIS SURFACE

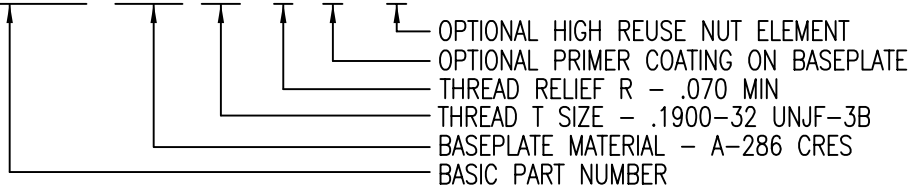
DISPOSABLE ELASTIC FIXTURE HOLDS NUTPLATE WHILE ADHESIVE CURES



PART NUMBER	THREAD T	A MAX	B MAX	D MIN	H MAX	R MIN
CB8009 () 08-1	.1640-32 UNJC-3B	.745	.454	.224	.250	.070
CB8009 () 3-1	.1900-32 UNJF-3B	.745	.454	.250	.250	.070
CB8009 () 3-2					.312	.125
CB8009 () 3-3					.375	.188
CB8009 () 3-4					.438	.250
CB8009 () 3-5					.502	.313
CB8009 () 3-6					.564	.375
CB8009 () 4-1	.2500-28 UNJF-3B	.948	.554	.312	.295	.070
CB8009 () 4-2					.357	.125
CB8009 () 4-3					.419	.188
CB8009 () 4-4					.481	.250
CB8009 () 4-5					.543	.313
CB8009 () 4-6					.605	.375
CB8009 () 5-1	.3125-24 UNJF-3B	1.042	.650	.375	.338	.070
CB8009 () 5-2					.394	.125
CB8009 () 5-3					.455	.188
CB8009 () 5-4					.524	.250
CB8009 () 5-5					.586	.313
CB8009 () 5-6					.649	.375
CB8009 () 6-1	.3750-24 UNJF-3B	1.182	.750	.437	.375	.070
CB8009 () 6-2					.425	.125

EXAMPLE PART NUMBER

CB8009 CR 3-1 P R



UNLESS OTHERWISE SPECIFIED, ALL DIMENSIONS ARE IN INCHES AND TOLERANCES ARE AS SHOWN BELOW. DIMENSIONAL TOLERANCES AND SYMBOLS PER ANSI Y14.5M-1982.

PROPRIETARY PARTS SHOWN IN THIS DRAWING ARE THE SUBJECT OF ISSUED UNITED STATES AND FOREIGN PATENTS AND PATENTS PENDING. UNAUTHORIZED REPRODUCTION AND/OR DISTRIBUTION OF THIS DRAWING IS SPECIFICALLY PROHIBITED.

GLICK BOND

CARSON CITY
 NEVADA 89706

CAD CB8009-1

APPROVALS	DATE
DRAWN MG	7NOV97
CHECKED DAC	7NOV97
RELEASED CGH	26NOV97
REVISED MG	7NOV97

TITLE			
NUTPLATE, TWO LUG, BONDED			
SIZE	CAGE CODE	DWG. NO.	REV.
A	66530	CB8009	4
SCALE	2/1 5NOV97		SHEET 1 OF 2

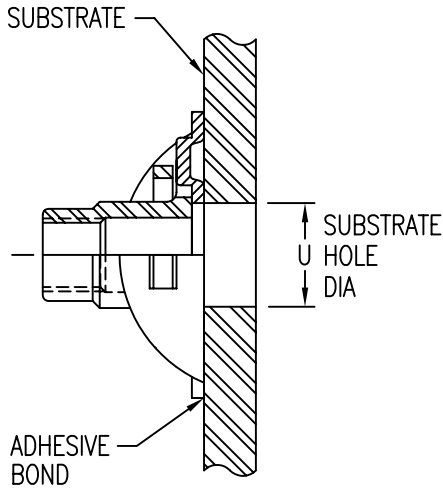


TABLE 2 INSTALLATION HOLE SIZE AND REPLACEMENT COMPONENT PART NUMBERS

THD SIZE CODE	U MAX	NUT PART NO *	CLIP PART NO
08	.224	CB8001CR08-1 ()	CB8002-3
3	.250	CB8001CR3-() ()	
4	.312	CB8001CR4-() ()	CB8002-4
5	.375	CB8001CR5-() ()	CB8002-5
6	.437	CB8001CR6-() ()	CB8002-6

* () FIRST DASH NUMBER SAME AS NUTPLATE THREAD RELIEF CODE.
 () SECOND DASH NUMBER: NO CODE - 15 REUSE CYCLES.
 "R" CODE - 50 REUSE CYCLES.

BASEPLATE MATERIAL AND FINISH DATA

CODE	MATERIAL	SPECIFICATION	FINISH	SPECIFICATION
A	ALUMINUM	QQ-A-250	NONE	
AA	ALUMINUM	QQ-A-250	ANODIZE	MIL-A-8625, TY 1
CR	A-286 CRES	AMS 5525	PASSIVATE	QQ-P-35

MATERIAL & FINISH: NUT ELEMENT: SEE CB8001
 CLIP: SEE CB8002

OPTIONAL PRIMER COATING ON BASEPLATE: EPOXY PRIMER PER MIL-P-85582.

ADDITIONAL REQUIREMENTS:

NO SUFFIX (STANDARD NUT ELEMENT) THREAD LOCK FEATURE TO MAINTAIN LOCKING TORQUE VALUES SPECIFIED IN MIL-N-25027 FOR A MINIMUM OF 15 REUSE CYCLES.

"R" SUFFIX (HIGH REUSE NUT ELEMENT) THREAD LOCK FEATURE TO MAINTAIN LOCKING TORQUE VALUES SPECIFIED IN MIL-N-25027 FOR A MINIMUM OF 50 REUSE CYCLES.

NOTES: 1. CB8009()2-1 PART NUMBER IS INACTIVE FOR NEW DESIGN.
 CB8009()08-1 HAS REPLACED CB8009()2-1
 (PART NUMBER CHANGE ONLY, NUTPLATE DESIGN HAS NOT CHANGED).

UNLESS OTHERWISE SPECIFIED, ALL DIMENSIONS ARE IN INCHES AND TOLERANCES ARE AS SHOWN BELOW. DIMENSIONAL TOLERANCES AND SYMBOLS PER ANSI Y14.5M-1982.

PROPRIETARY PARTS SHOWN IN THIS DRAWING ARE THE SUBJECT OF ISSUED UNITED STATES AND FOREIGN PATENTS AND PATENTS PENDING. UNAUTHORIZED REPRODUCTION AND/OR DISTRIBUTION OF THIS DRAWING IS SPECIFICALLY PROHIBITED.

GLICK BOND

CARSON CITY
 NEVADA 89706

CAD CB8009-2		APPROVALS		DATE	TITLE			
ANGLES	±1°	DRAWN	MGV	7NOV97	NUTPLATE, TWO LUG, BONDED			
.XX	±.03	CHECKED	DAC	7NOV97	SIZE	CAGE CODE	DWG. NO.	REV.
.XXX	±.010	RELEASED	CGH	26NOV97	A	66530	CB8009	4
.XXXX	±.001	REVISED	MGV	7NOV97	SCALE	2/1	5NOV97	SHEET 2 OF 2