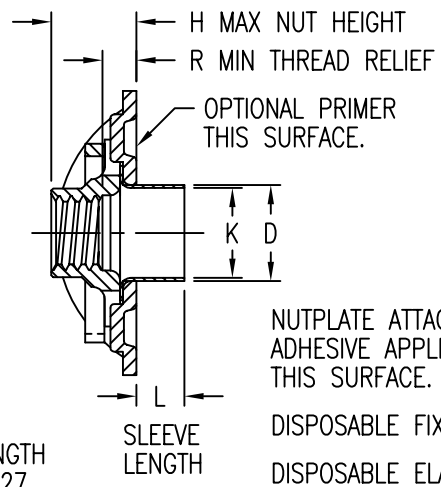
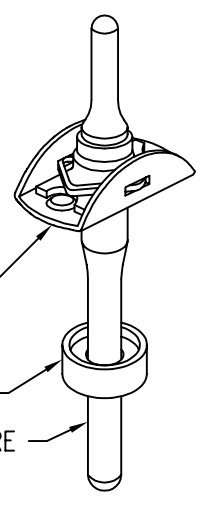


NUTPLATE MEETS THE STRENGTH REQUIREMENTS OF NASM25027.
NOTE: ALL DIMENSIONS BEFORE PAINT.



NUTPLATE ATTACHED BY ADHESIVE APPLIED TO THIS SURFACE.
DISPOSABLE FIXTURE RING
DISPOSABLE ELASTIC FIXTURE HOLDS NUTPLATE WHILE ADHESIVE CURES.



| PART NUMBER | THREAD T | A MAX | B MAX | D MAX | K MIN | H MAX | R MIN |
|-----------------------------|------------------|-------|-------|-------|-------|-------|-------|
| CB6209 () 08 () 1 () () | .1640-32 UNJC-3B | .745 | .454 | .217 | .195 | .265 | .070 |
| CB6209 () 3 () 1 () () | .1900-32 UNJF-3B | .745 | .454 | .250 | .225 | .265 | .070 |
| CB6209 () 3 () 2 () () | | | | | | .327 | .125 |
| CB6209 () 3 () 3 () () | | | | | | .390 | .188 |
| CB6209 () 3 () 4 () () | | | | | | .453 | .250 |
| CB6209 () 3 () 5 () () | | | | | | .517 | .313 |
| CB6209 () 3 () 6 () () | | | | | | .579 | .375 |
| CB6209 () 4 () 1 () () | .2500-28 UNJF-3B | .948 | .554 | .312 | .287 | .310 | .070 |
| CB6209 () 4 () 2 () () | | | | | | .372 | .125 |
| CB6209 () 4 () 3 () () | | | | | | .434 | .188 |
| CB6209 () 4 () 4 () () | | | | | | .496 | .250 |
| CB6209 () 4 () 5 () () | | | | | | .558 | .313 |
| CB6209 () 4 () 6 () () | | | | | | .620 | .375 |
| CB6209 () 5 () 1 () () | .3125-24 UNJF-3B | 1.042 | .650 | .375 | .350 | .359 | .070 |
| CB6009 () 5 () 2 () () | | | | | | .415 | .125 |
| CB6209 () 5 () 3 () () | | | | | | .476 | .188 |
| CB6209 () 5 () 4 () () | | | | | | .545 | .250 |
| CB6209 () 5 () 5 () () | | | | | | .607 | .313 |
| CB6209 () 5 () 6 () () | | | | | | .670 | .375 |
| CB6209 () 6 () 1 () () | .3750-24 UNJF-3B | 1.182 | .750 | .437 | .412 | .395 | .070 |
| CB6209 () 6 () 2 () () | | | | | | .445 | .125 |

UNLESS OTHERWISE SPECIFIED, ALL DIMENSIONS ARE IN INCHES AND TOLERANCES ARE AS SHOWN BELOW. DIMENSIONAL TOLERANCES AND SYMBOLS PER ANSI Y14.5M-1982.

PROPRIETARY PARTS SHOWN IN THIS DRAWING ARE THE SUBJECT OF ISSUED UNITED STATES AND FOREIGN PATENTS AND PATENTS PENDING. UNAUTHORIZED REPRODUCTION AND/OR DISTRIBUTION OF THIS DRAWING IS SPECIFICALLY PROHIBITED.

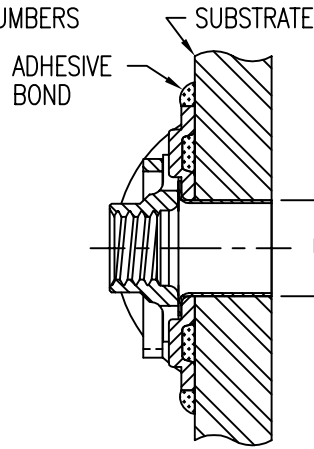


CARSON CITY NEVADA 89706

| | | | | | | | | |
|--------------|-------|-----------|-----|---------|------------------------------------|-----------|----------|--------------|
| CAD CB6209-1 | | APPROVALS | | DATE | TITLE | | | |
| ANGLES | ±1° | DRAWN | DAC | 10SEP01 | NUTPLATE, TWO LUG, STRAIGHT SLEEVE | | | |
| .XX | ±.03 | CHECKED | DAC | 10SEP01 | SIZE | CAGE CODE | DWG. NO. | REV. |
| .XXX | ±.010 | RELEASED | CGH | 10SEP01 | A | 66530 | CB6209 | 6 |
| .XXXX | ±.001 | REVISED | DAC | 10SEP01 | SCALE | 2/1 | 10SEP01 | SHEET 1 OF 4 |

INSTALLATION HOLE SIZE AND REPLACEMENT COMPONENT PART NUMBERS

| THREAD SIZE CODE | INSTALLATION HOLE DIA U | NUT PART NO * | CLIP PART NO |
|------------------|-------------------------|------------------|--------------|
| 08 | .218 - .222 | CB6001 () 08-1 | CB6002-3 |
| 3 | .250 - .255 | CB6001 () 3-() | CB6002-3 |
| 4 | .312 - .317 | CB6001 () 4-() | CB6002-4 |
| 5 | .375 - .380 | CB6001 () 5-() | CB6002-5 |
| 6 | .438 - .443 | CB6001 () 6-() | CB6002-6 |



SLEEVE LENGTH DATA

| SLEEVE CODE | SLEEVE LENGTH L ±.010 |
|-------------|-----------------------|
| 1 | .031 |
| 2 | .062 |
| 3 | .093 |
| 4 | .125 |
| 5 | .156 |
| 6 | .187 |
| 7 | .218 |
| 8 | .250 |
| 9 | .281 |
| 10 | .312 |
| 11 | .343 |
| 12 | .375 |
| 13 | .406 |
| 14 | .437 |
| 15 | .468 |
| 16 | .500 |
| 17 | .531 |
| 18 | .562 |
| 19 | .593 |
| 20 | .625 |
| 21 | .656 |
| 22 | .687 |
| 23 | .718 |
| 24 | .750 |
| 25 | .781 |
| 26 | .812 |
| 27 | .843 |
| 28 | .875 |
| 29 | .906 |
| 30 | .937 |
| 31 | .968 |
| 32 | 1.000 |

* FIRST () DESIGNATES NUT MATERIAL CODE.

- CR = A-286 CRES, PASSIVATE, DRI-FILM LUBE.
- CRC = A-286 CRES, CADMIUM PLATING, DRI-FILM LUBE.
- CRS = A-286 CRES, SILVER PLATING.

SECOND () DESIGNATES NUTPLATE THREAD RELIEF (NUT C'BORE) CODE.

"NL" SUFFIX TO NUT PART NO. INDICATES NON-LOCKING NUT ELEMENT.

BASEPLATE MATERIAL AND FINISH DATA

| CODE | MATERIAL | SPEC. | FINISH | SPEC. |
|------|------------|----------|-----------|------------------|
| A | ALUMINUM | QQ-A-250 | NONE | |
| AA | ALUMINUM | QQ-A-250 | ANODIZE | MIL-A-8625, TY 1 |
| CR | A-286 CRES | AMS 5525 | PASSIVATE | QQ-P-35 |

OPTIONAL PRIMER COATING ON BASEPLATE: EPOXY PRIMER PER MIL-P-85582.

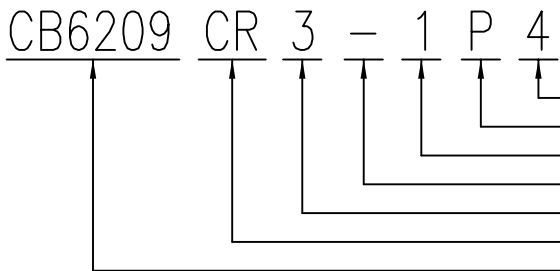
NUT MATERIAL AND FINISH DATA (SEE CB6001)

| CODE | MATERIAL | FINISH | SPEC. | LUBRICATION | SPEC. |
|------|------------|-----------------|----------|---------------|-------------------|
| - | A-286 CRES | PASSIVATE | QQ-P-35 | DRI-FILM LUBE | MIL-L-46010, TY 1 |
| CRC | A-286 CRES | CADMIUM PLATING | QQ-P-416 | DRI-FILM LUBE | MIL-L-46010, TY 1 |
| CRS | A-286 CRES | SILVER PLATING | AMS 2410 | NONE | |

MATERIAL AND FINISH DATA:

- MATERIAL: CLIP: 302 CRES PER AMS 5688 OR 5866, OR 18-2 MN CRES PER ARMCO SPEC. (SEE CB6002)
- SLEEVE: 304, 305, OR A-286 CRES PER AMS 5514, 5525, OR 5639
- FINISH: CLIP: PASSIVATE PER QQ-P-35 (SEE CB6002)
- SLEEVE: PASSIVATE PER QQ-P-35

EXAMPLE PART NUMBER



"NL" SUFFIX TO PART NUMBER INDICATES NON-LOCKING NUT ELEMENT.

- SLEEVE LENGTH L IN 32NDS (SEE TABLE) - .125
- OPTIONAL PRIMER COATING ON BASEPLATE
- THREAD RELIEF R - .070 MIN
- NUT MATERIAL - A-286 CRES, DRI-FILM LUBE
- THREAD T SIZE - .1900-32 UNJF-3B
- BASEPLATE MATERIAL - A-286 CRES
- BASIC PART NUMBER

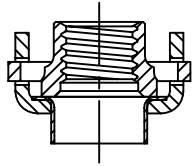
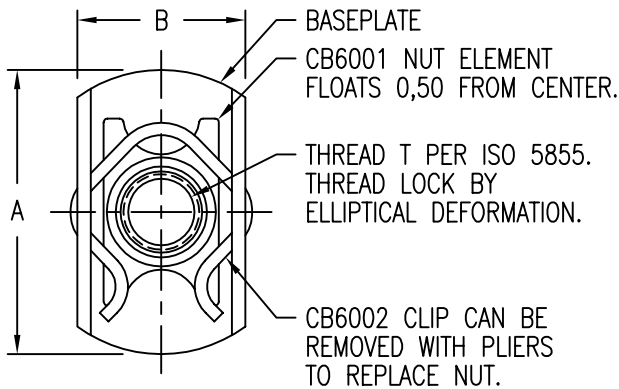
UNLESS OTHERWISE SPECIFIED, ALL DIMENSIONS ARE IN INCHES AND TOLERANCES ARE AS SHOWN BELOW. DIMENSIONAL TOLERANCES AND SYMBOLS PER ANSI Y14.5M-1982.

PROPRIETARY PARTS SHOWN IN THIS DRAWING ARE THE SUBJECT OF ISSUED UNITED STATES AND FOREIGN PATENTS AND PATENTS PENDING. UNAUTHORIZED REPRODUCTION AND/OR DISTRIBUTION OF THIS DRAWING IS SPECIFICALLY PROHIBITED.



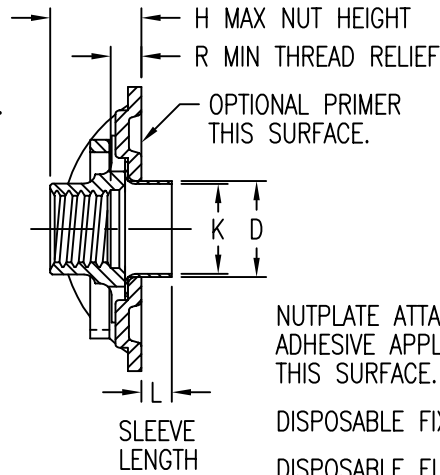
CARSON CITY NEVADA 89706

| | | | | | | | | |
|--------------|-------|-----------|-----|---------|------------------------------------|-------------|----------|--------------|
| CAD CB6209-2 | | APPROVALS | | DATE | TITLE | | | |
| ANGLES | ±1° | DRAWN | DAC | 10SEP01 | NUTPLATE, TWO LUG, STRAIGHT SLEEVE | | | |
| .XX | ±.03 | CHECKED | DAC | 10SEP01 | SIZE | CAGE CODE | DWG. NO. | REV. |
| .XXX | ±.010 | RELEASED | CGH | 10SEP01 | A | 66530 | CB6209 | 6 |
| .XXXX | ±.001 | REVISED | DAC | 10SEP01 | SCALE | 2/1 10SEP01 | | SHEET 2 OF 4 |



NUTPLATE MEETS THE TENSILE STRENGTH REQUIREMENTS OF ISO 5858 (900 MPa).

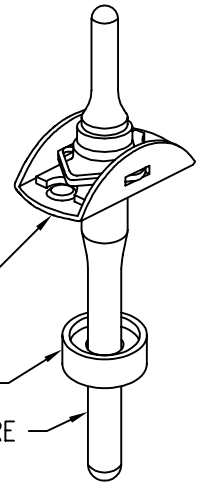
NOTE: ALL DIMENSIONS BEFORE PAINT.



NUTPLATE ATTACHED BY ADHESIVE APPLIED TO THIS SURFACE.

DISPOSABLE FIXTURE RING

DISPOSABLE ELASTIC FIXTURE HOLDS NUTPLATE WHILE ADHESIVE CURES.



THREAD AND DIMENSION DATA

| PART NUMBER | THREAD T | A MAX | B MAX | D MAX | K MIN | H MAX | R MIN |
|--------------------------|------------------|-------|-------|-------|-------|-------|-------|
| CB6209 () 4M () 1 () | MJ4 X 0,7 4H6H | 19,0 | 11,6 | 5,70 | 5,05 | 5,6 | 1,6 |
| CB6209 () 5M () 1 () | MJ5 X 0,8 4H6H | 19,0 | 11,6 | 6,35 | 5,70 | 6,6 | 1,6 |
| CB6209 () 5M () 4 () | | | | | | 8,4 | 4,0 |
| CB6209 () 5M () 6 () | | | | | | 10,4 | 6,0 |
| CB6209 () 5M () 8 () | | | | | | 12,4 | 8,0 |
| CB6209 () 5M () 10 () | | | | | | 14,4 | 10,0 |
| CB6209 () 6M () 1 () | MJ6 X 1,0 4H5H | 24,1 | 14,1 | 7,95 | 7,25 | 7,5 | 1,6 |
| CB6209 () 6M () 4 () | | | | | | 9,4 | 4,0 |
| CB6209 () 6M () 6 () | | | | | | 11,4 | 6,0 |
| CB6209 () 6M () 8 () | | | | | | 13,4 | 8,0 |
| CB6209 () 6M () 10 () | | | | | | 15,4 | 10,0 |
| CB6209 () 8M () 1 () | MJ8 X 1,0 4H5H | 26,5 | 16,6 | 9,55 | 8,85 | 8,8 | 1,6 |
| CB6209 () 8M () 4 () | | | | | | 11,6 | 4,0 |
| CB6209 () 8M () 6 () | | | | | | 13,6 | 6,0 |
| CB6209 () 8M () 8 () | | | | | | 15,6 | 8,0 |
| CB6209 () 8M () 10 () | | | | | | 17,6 | 10,0 |
| CB6209 () 10M () 1 () | MJ10 X 1,25 4H5H | 30,1 | 19,1 | 11,10 | 10,45 | 10,5 | 1,6 |

UNLESS OTHERWISE SPECIFIED, ALL DIMENSIONS ARE IN MILLIMETERS AND TOLERANCES ARE AS SHOWN BELOW. DIMENSIONAL TOLERANCES AND SYMBOLS PER ANSI Y14.5M-1982.

PROPRIETARY PARTS SHOWN IN THIS DRAWING ARE THE SUBJECT OF ISSUED UNITED STATES AND FOREIGN PATENTS AND PATENTS PENDING. UNAUTHORIZED REPRODUCTION AND/OR DISTRIBUTION OF THIS DRAWING IS SPECIFICALLY PROHIBITED.

GLICK BOND

CARSON CITY
NEVADA 89706

CAD CB6209-3
METRIC DIMENSIONS

| APPROVALS | DATE |
|--------------|---------|
| DRAWN DAC | 10SEP01 |
| CHECKED DAC | 10SEP01 |
| RELEASED CGH | 10SEP01 |
| REVISED DAC | 10SEP01 |

TITLE
NUTPLATE, TWO LUG, STRAIGHT SLEEVE

| | |
|--------|-------|
| ANGLES | ±1° |
| .X | ±0,8 |
| .XX | ±0,25 |

| SIZE | CAGE CODE | DWG. NO. | REV. |
|-------|-----------|-----------------|--------------|
| A | 66530 | CB6209 (METRIC) | 6 |
| SCALE | 2/1 | 10SEP01 | SHEET 3 OF 4 |

INSTALLATION HOLE SIZE AND REPLACEMENT COMPONENT PART NUMBERS

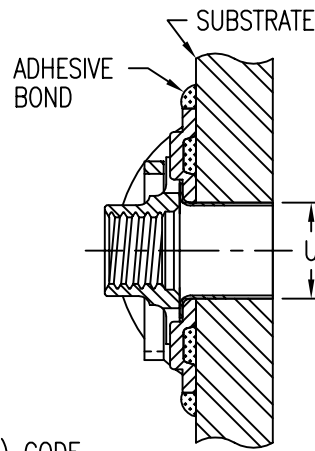
| THREAD SIZE CODE | INSTALLATION HOLE DIA U | NUT PART NO. * | CLIP PART NO. |
|------------------|-------------------------|-------------------|---------------|
| 4M | 5,70 - 5,85 | CB6001 () 4M 1 | CB6002-5M |
| 5M | 6,35 - 6,50 | CB6001 () 5M () | CB6002-5M |
| 6M | 7,95 - 8,10 | CB6001 () 6M () | CB6002-6M |
| 8M | 9,55 - 9,70 | CB6001 () 8M () | CB6002-8M |
| 10M | 11,10 - 11,25 | CB6001 () 10M 1 | CB6002-10M |

* FIRST () DESIGNATES NUT MATERIAL CODE.

CR = A-286 CRES, PASSIVATE, DRI-FILM LUBE.
 CRC = A-286 CRES, CADMIUM PLATING, DRI-FILM LUBE.
 CRS = A-286 CRES, SILVER PLATING.

SECOND () DESIGNATES NUTPLATE THREAD RELIEF (NUT C'BORE) CODE.

"NL" SUFFIX TO NUT PART NO. INDICATES NON-LOCKING NUT ELEMENT.



SLEEVE LENGTH DATA

| SLEEVE CODE | SLEEVE LENGTH L ±0,25 |
|-------------|-----------------------|
| 005 | 0,5 |
| 010 | 1,0 |
| 015 | 1,5 |
| 020 | 2,0 |
| 025 | 2,5 |
| 030 | 3,0 |
| 035 | 3,5 |
| 040 | 4,0 |
| 045 | 4,5 |
| 050 | 5,0 |
| 055 | 5,5 |
| 060 | 6,0 |
| 065 | 6,5 |
| 070 | 7,0 |
| 075 | 7,5 |
| 080 | 8,0 |
| 085 | 8,5 |
| 090 | 9,0 |
| 095 | 9,5 |
| 100 | 10,0 |
| 105 | 10,5 |
| 110 | 11,0 |
| 115 | 11,5 |
| 120 | 12,0 |
| 125 | 12,5 |
| 130 | 13,0 |
| 135 | 13,5 |
| 140 | 14,0 |
| 145 | 14,5 |
| 150 | 15,0 |

BASEPLATE MATERIAL AND FINISH DATA

| CODE | MATERIAL | SPEC. | FINISH | SPEC. |
|------|------------|----------|-----------|------------------|
| A | ALUMINUM | QQ-A-250 | NONE | |
| AA | ALUMINUM | QQ-A-250 | ANODIZE | MIL-A-8625, TY 1 |
| CR | A-286 CRES | AMS 5525 | PASSIVATE | QQ-P-35 |

OPTIONAL PRIMER COATING ON BASEPLATE: EPOXY PRIMER PER MIL-P-85582.

NUT MATERIAL AND FINISH DATA

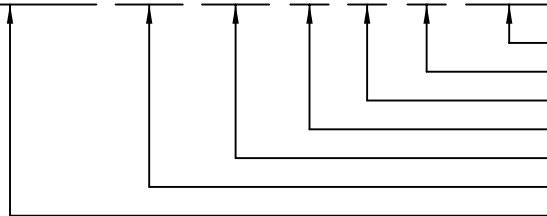
| CODE | MATERIAL | FINISH | SPEC. | LUBRICATION | SPEC. |
|------|------------|-----------------|----------|---------------|-------------------|
| NONE | A-286 CRES | PASSIVATE | QQ-P-35 | DRI-FILM LUBE | MIL-L-46010, TY 1 |
| CRC | A-286 CRES | CADMIUM PLATING | QQ-P-416 | DRI-FILM LUBE | MIL-L-46010, TY 1 |
| CRS | A-286 CRES | SILVER PLATING | AMS 2410 | NONE | |

MATERIAL AND FINISH DATA:

MATERIAL: CLIP: 302 CRES PER AMS 5688 OR 5866, OR 18-2 MN CRES PER ARMCO SPEC. (SEE CB6002)
 SLEEVE: 304, 305, OR A-286 CRES PER AMS 5514, 5525, OR 5639
 FINISH: CLIP: PASSIVATE PER QQ-P-35 (SEE CB6002)
 SLEEVE: PASSIVATE PER QQ-P-35

EXAMPLE PART NUMBER

CB6209 CR 5M 1 P 020



"NL" SUFFIX TO PART NUMBER INDICATES NON-LOCKING NUT ELEMENT.

SLEEVE LENGTH L IN 0,1 MM (SEE TABLE) - 2,0 MM
 OPTIONAL PRIMER COATING ON BASEPLATE
 THREAD RELIEF R - 1,6 MIN
 NUT MATERIAL - A-286 CRES, DRI-FILM LUBE
 THREAD T SIZE - MJ5 X 0,8 4H6H
 BASEPLATE MATERIAL - A-286 CRES
 BASIC PART NUMBER

UNLESS OTHERWISE SPECIFIED, ALL DIMENSIONS ARE IN MILLIMETERS AND TOLERANCES ARE AS SHOWN BELOW. DIMENSIONAL TOLERANCES AND SYMBOLS PER ANSI Y14.5M-1982.

PROPRIETARY PARTS SHOWN IN THIS DRAWING ARE THE SUBJECT OF ISSUED UNITED STATES AND FOREIGN PATENTS AND PATENTS PENDING. UNAUTHORIZED REPRODUCTION AND/OR DISTRIBUTION OF THIS DRAWING IS SPECIFICALLY PROHIBITED.



CARSON CITY NEVADA 89706

| | |
|-------------------|-------|
| CAD CB6209-4 | |
| METRIC DIMENSIONS | |
| ANGLES | ±1° |
| .X | ±0,8 |
| .XX | ±0,25 |

| APPROVALS | DATE |
|--------------|---------|
| DRAWN DAC | 10SEP01 |
| CHECKED DAC | 10SEP01 |
| RELEASED CGH | 10SEP01 |
| REVISED DAC | 10SEP01 |

| | | | |
|------------------------------------|-------------|-----------------|--------------|
| TITLE | | | |
| NUTPLATE, TWO LUG, STRAIGHT SLEEVE | | | |
| SIZE | CAGE CODE | DWG. NO. | REV. |
| A | 66530 | CB6209 (METRIC) | 6 |
| SCALE | 2/1 10SEP01 | | SHEET 4 OF 4 |