

SADDLE MATERIAL AND FINISH DATA

CODE	MATERIAL	SPEC.	COLOR
K	PEKK	NONE	NATURAL
N	NYLON, NATURAL	ASTM D4066 OR EQUAL	NATURAL
NB	NYLON, BLACK, STABILIZED	ASTM D4066 OR EQUAL	BLACK
NH	NYLON, HEAT STABILIZED	ASTM D4066 OR EQUAL	NATURAL
P	PEEK	NONE	NATURAL
T	TEFZEL	FLUOROPOLYMER	BLUE
V	POLYETHERIMIDE	ULTEM 1000 OR EQUAL	NATURAL
VC	CARBON/POLYETHERIMIDE	ULTEM 7201 OR EQUAL	NATURAL

BASEPLATE MATERIAL

CODE	MATERIAL
C	CARBON/EPOXY, 350°F CURE
E	GLASS/EPOXY, 350°F CURE
G	GLASS/EPOXY, 250°F CURE

DIMENSION DATA

SIZE CODE	MAX TIE WIDTH D REF	SADDLE DIMENSIONS		
		A	B	C
2	.100	.56	.34	.27
3	.190	.67	.44	.33

RIVET MATERIAL: 300 SERIES OR A-286 CRES
 RIVET FINISH: PASSIVATE PER AMS 2700
 MANUFACTURER'S OPTION: 300 SERIES CRES WASHER UNDER RIVET HEAD

OPTIONAL BASEPLATE PRIMER

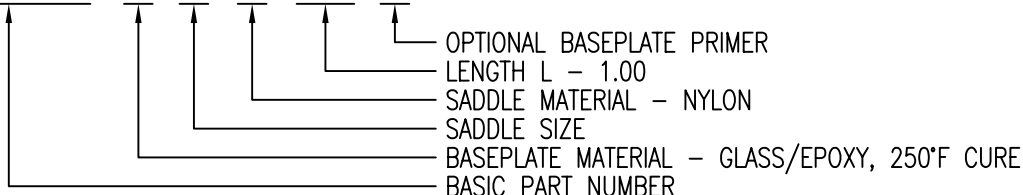
CODE	MATERIAL SPEC.
P	MIL-PRF-85582

LENGTH L DATA

CODE	L ±.030
8	.500
12	.750
16	1.000
24	1.500

EXAMPLE PART NUMBER

CB4021 G 3 N 16 P



UNLESS OTHERWISE SPECIFIED, ALL DIMENSIONS ARE IN INCHES AND TOLERANCES ARE AS SHOWN BELOW. DIMENSIONAL TOLERANCES AND SYMBOLS PER ANSI Y14.5M-1982.

PROPRIETARY PARTS SHOWN IN THIS DRAWING ARE THE SUBJECT OF ISSUED UNITED STATES AND FOREIGN PATENTS AND PATENTS PENDING. UNAUTHORIZED REPRODUCTION AND/OR DISTRIBUTION OF THIS DRAWING IS SPECIFICALLY PROHIBITED.

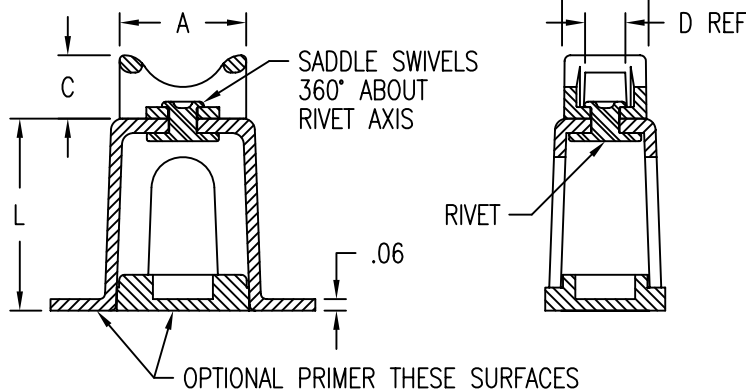
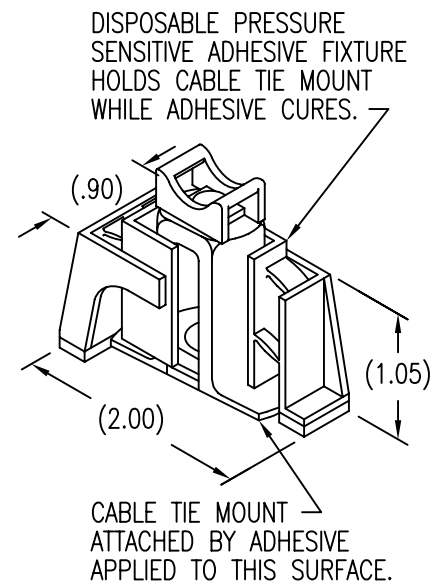
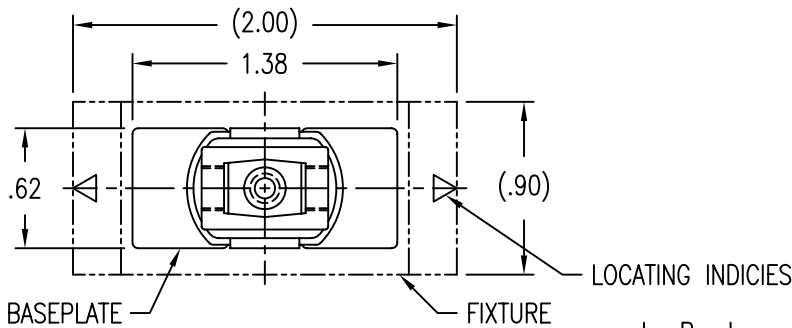


CARSON CITY
NEVADA 89706

CAD CB4021-1

APPROVALS	DATE
DRAWN DAC	7JUL09
CHECKED DAC	7JUL09
RELEASED CGH	9JUL09
REVISED DAC	7JUL09

TITLE			
MOUNT, CABLE TIE, STANDOFF, COMPOSITE			
SIZE	CAGE CODE	DWG. NO.	REV.
A	66530	CB4021	14
SCALE	1/1	7JUL09	SHEET 1 OF 2



SADDLE MATERIAL AND FINISH DATA

CODE	MATERIAL	SPEC.	COLOR
K	PEKK	NONE	NATURAL
N	NYLON, NATURAL	ASTM D4066 OR EQUAL	NATURAL
NB	NYLON, BLACK, STABILIZED	ASTM D4066 OR EQUAL	BLACK
NH	NYLON, HEAT STABILIZED	ASTM D4066 OR EQUAL	NATURAL
P	PEEK	NONE	NATURAL
T	TEFZEL	FLUOROPOLYMER	BLUE
V	POLYETHERIMIDE	ULTEM 1000 OR EQUAL	NATURAL
VC	CARBON/POLYETHERIMIDE	ULTEM 7201 OR EQUAL	NATURAL

RIVET MATERIAL: 300 SERIES OR A-286 CRES
 RIVET FINISH: PASSIVATE PER AMS 2700
 MANUFACTURER'S OPTION: 300 SERIES CRES WASHER UNDER RIVET HEAD

DIMENSION DATA

SIZE CODE	MAX TIE WIDTH D REF	SADDLE DIMENSIONS		
		A	B	C
2	.100	.56	.34	.27
3	.190	.67	.44	.33

LENGTH L DATA

CODE	L ±.030
8	.500
12	.750
16	1.000
24	1.500
32	2.000

BASEPLATE MATERIAL

CODE	MATERIAL
U	30% GLASS/PEI
UC	30% CARBON/PEI
V	40% GLASS/PEI
VC	40% CARBON/PEI
W	30% GLASS/PEI *
WC	30% CARBON/PEI *

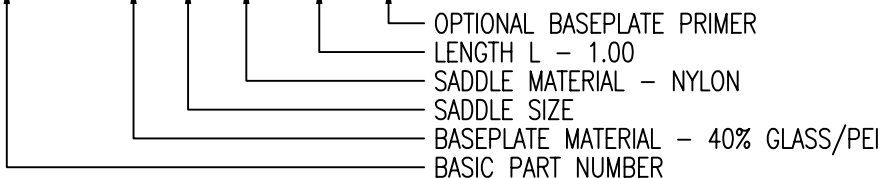
* LOW HEAT RELEASE

OPTIONAL BASEPLATE PRIMER

CODE	MATERIAL SPEC.
P	MIL-PRF-85582

EXAMPLE PART NUMBER

CB4021 V 3 N 16 P



UNLESS OTHERWISE SPECIFIED, ALL DIMENSIONS ARE IN INCHES AND TOLERANCES ARE AS SHOWN BELOW. DIMENSIONAL TOLERANCES AND SYMBOLS PER ANSI Y14.5M-1982.

PROPRIETARY PARTS SHOWN IN THIS DRAWING ARE THE SUBJECT OF ISSUED UNITED STATES AND FOREIGN PATENTS AND PATENTS PENDING. UNAUTHORIZED REPRODUCTION AND/OR DISTRIBUTION OF THIS DRAWING IS SPECIFICALLY PROHIBITED.



CARSON CITY NEVADA 89706

CAD CB4021-2

APPROVALS	DATE
DRAWN <i>DAC</i>	7JUL09
CHECKED <i>DAC/mtm</i>	7JUL09
RELEASED <i>CGH</i>	9JUL09
REVISED <i>DAC</i>	7JUL09

TITLE MOUNT, CABLE TIE, STANDOFF, COMPOSITE

ANGLES	±1°
.XX	±.03
.XXX	±.010
.XXXX	±.001

SIZE	CAGE CODE	DWG. NO.	REV.
A	66530	CB4021	14
SCALE	1/1		7JUL09
SHEET 2 OF 2			