

SADDLE MATERIAL AND FINISH DATA

| CODE | MATERIAL | SPEC. | COLOR |
|------|--------------------------|---------------------|---------|
| N | NYLON, NATURAL | ASTM D4066 OR EQUAL | NATURAL |
| NB | NYLON, BLACK, STABILIZED | ASTM D4066 OR EQUAL | BLACK |
| P | PEEK | NONE | NATURAL |
| T | FLUOROPOLYMER | TEFZEL | BLUE |
| V | POLYETHERIMIDE | ULTEM 1000 OR EQUAL | NATURAL |
| VC | CARBON/PEI | ASTM D5205 | NATURAL |

RIVET MATERIAL: 300 SERIES OR A-286 CRES.
 RIVET FINISH: PASSIVATE PER AMS 2700.
 MANUFACTURER'S OPTION: 300 SERIES CRES
 TRIM WASHER UNDER RIVET HEAD.

DIMENSION DATA

| SIZE CODE | MAX TIE WIDTH D REF | SADDLE DIMENSIONS | | |
|-----------|---------------------|-------------------|-----|-----|
| | | A | B | C |
| 2 | .100 | .56 | .34 | .27 |
| 3 | .190 | .67 | .44 | .33 |
| 5 | .350 | .92 | .56 | .42 |

LENGTH DATA

| CODE | 6 | 8 | 12 | 16 | 24 |
|---------|-------|-------|-------|-------|-------|
| L ±.030 | .375 | .500 | .750 | 1.000 | 1.500 |
| X ±.015 | .750 | .875 | 1.125 | 1.375 | 1.875 |
| Y ±.015 | 1.000 | 1.125 | 1.375 | 1.625 | 2.125 |

BASEPLATE MATERIAL

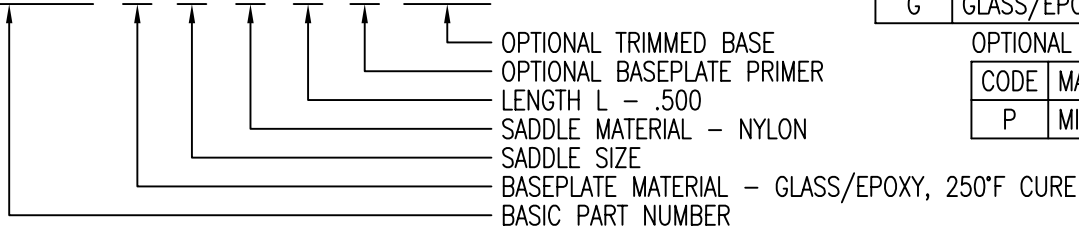
| CODE | MATERIAL |
|------|--------------------------|
| C | CARBON/EPOXY, 350°F CURE |
| E | GLASS/EPOXY, 350°F CURE |
| G | GLASS/EPOXY, 250°F CURE |

OPTIONAL BASEPLATE PRIMER

| CODE | MATERIAL SPEC. |
|------|----------------|
| P | MIL-PRF-85582 |

EXAMPLE PART NUMBER

CB4020 G 3 N 8 P 750



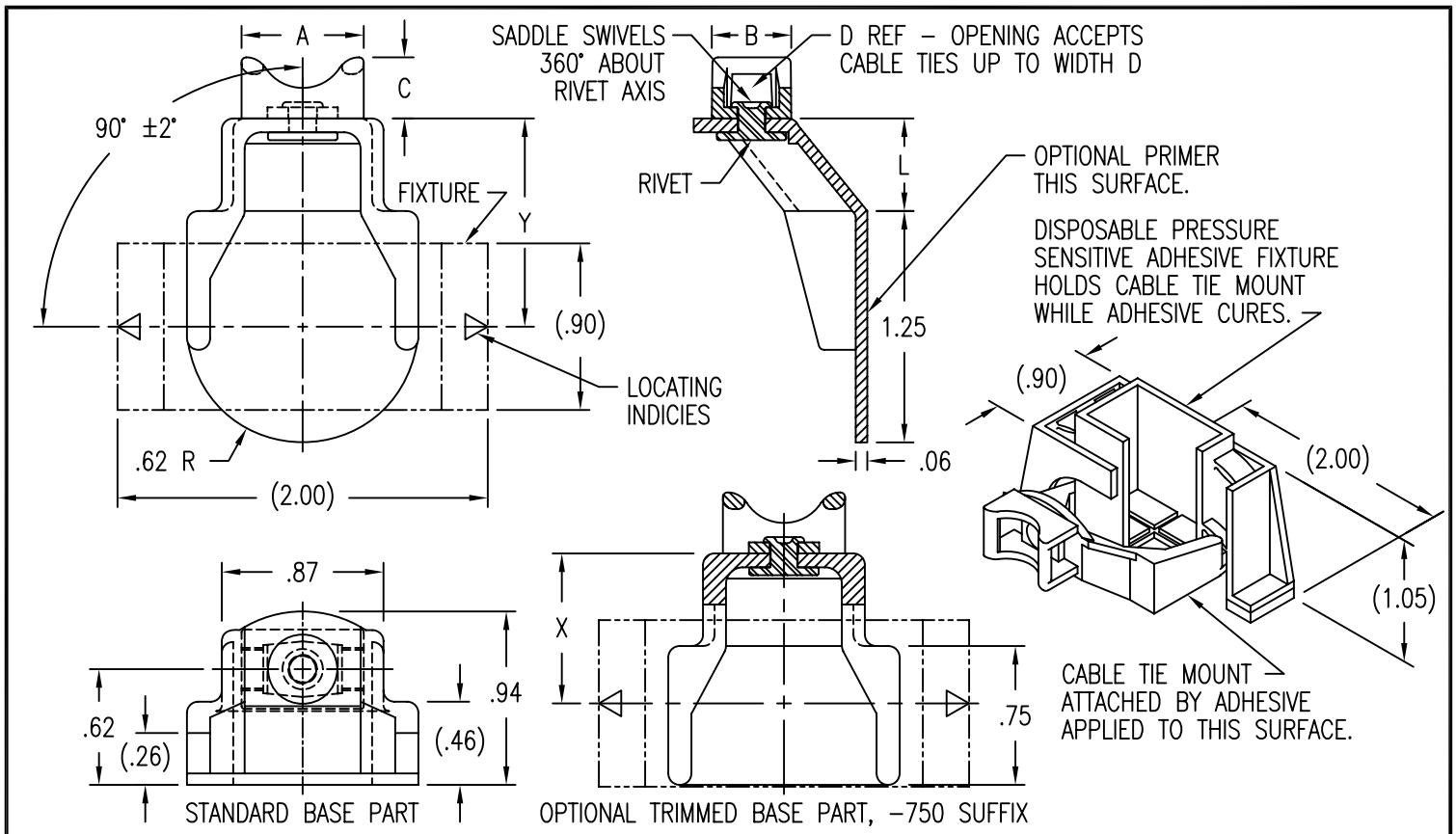
UNLESS OTHERWISE SPECIFIED, ALL DIMENSIONS ARE IN INCHES AND TOLERANCES ARE AS SHOWN BELOW. DIMENSIONAL TOLERANCES AND SYMBOLS PER ANSI Y14.5M-1982.

PROPRIETARY PARTS SHOWN IN THIS DRAWING ARE THE SUBJECT OF ISSUED UNITED STATES AND FOREIGN PATENTS AND PATENTS PENDING. UNAUTHORIZED REPRODUCTION AND/OR DISTRIBUTION OF THIS DRAWING IS SPECIFICALLY PROHIBITED.



CARSON CITY
NEVADA 89706

| CAD CB4020-1 | | APPROVALS | DATE | TITLE | | | |
|--------------|-------|-----------|--------|--|-----------|----------|--------------|
| ANGLES | ±1° | DRAWN | 7DEC06 | MOUNT, CABLE TIE, RIGHT ANGLE, COMPOSITE | | | |
| .XX | ±.03 | CHECKED | 7DEC06 | SIZE | CAGE CODE | DWG. NO. | REV. |
| .XXX | ±.010 | RELEASED | 7DEC06 | A | 66530 | CB4020 | 18 |
| .XXXX | ±.001 | REVISED | 7DEC06 | SCALE | 1/1 | 7DEC06 | SHEET 1 OF 2 |



SADDLE MATERIAL AND FINISH DATA

| CODE | MATERIAL | SPEC. | COLOR |
|------|--------------------------|---------------------|---------|
| N | NYLON, NATURAL | ASTM D4066 OR EQUAL | NATURAL |
| NB | NYLON, BLACK, STABILIZED | ASTM D4066 OR EQUAL | BLACK |
| P | PEEK | NONE | NATURAL |
| T | FLUOROPOLYMER | TEFZEL | BLUE |
| V | POLYETHERIMIDE | ULTEM 1000 OR EQUAL | NATURAL |
| VC | CARBON/PEI | ASTM D5205 | NATURAL |

DIMENSION DATA

| SIZE CODE | MAX TIE WIDTH D REF | SADDLE DIMENSIONS | | |
|-----------|---------------------|-------------------|-----|-----|
| | | A | B | C |
| 2 | .100 | .56 | .34 | .27 |
| 3 | .190 | .67 | .44 | .33 |
| 5 | .350 | .92 | .56 | .42 |

LENGTH DATA

| CODE | 6 | 8 | 12 | 16 | 24 |
|---------|-------|-------|-------|-------|-------|
| L ±.030 | .375 | .500 | .750 | 1.000 | 1.500 |
| X ±.015 | .750 | .875 | 1.125 | 1.375 | 1.875 |
| Y ±.015 | 1.000 | 1.125 | 1.375 | 1.625 | 2.125 |

RIVET MATERIAL: 300 SERIES OR A-286 CRES.
 RIVET FINISH: PASSIVATE PER AMS 2700.
 MANUFACTURER'S OPTION: 300 SERIES CRES TRIM WASHER UNDER RIVET HEAD.

OPTIONAL PRIMER

| CODE | MATERIAL SPEC. |
|------|----------------|
| P | MIL-PRF-85582 |

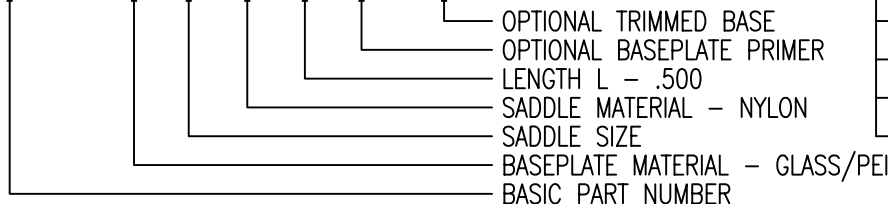
BASEPLATE MATERIAL

| CODE | MATERIAL |
|------|--------------------------|
| U | GLASS/PEI, 30% GLASS |
| UC | CARBON/PEI, 30% CARBON |
| V | GLASS/PEI, 40% GLASS |
| VC | CARBON/PEI, 40% CARBON |
| W | GLASS/PEI, 30% GLASS * |
| WC | CARBON/PEI, 30% CARBON * |

* LOW HEAT RELEASE

EXAMPLE PART NUMBER

CB4020 V 3 N 8 P 750



UNLESS OTHERWISE SPECIFIED, ALL DIMENSIONS ARE IN INCHES AND TOLERANCES ARE AS SHOWN BELOW. DIMENSIONAL TOLERANCES AND SYMBOLS PER ANSI Y14.5M-1982.

PROPRIETARY PARTS SHOWN IN THIS DRAWING ARE THE SUBJECT OF ISSUED UNITED STATES AND FOREIGN PATENTS AND PATENTS PENDING. UNAUTHORIZED REPRODUCTION AND/OR DISTRIBUTION OF THIS DRAWING IS SPECIFICALLY PROHIBITED.



CARSON CITY NEVADA 89706

| APPROVALS | | DATE | TITLE | | |
|-----------|----------|-----------------|--|-----------|-----------------|
| CAD | CB4020-2 | | MOUNT, CABLE TIE, RIGHT ANGLE, COMPOSITE | | |
| ANGLES | ±1° | DRAWN DAC | 7DEC06 | SIZE A | CAGE CODE 66530 |
| .XX | ±.03 | CHECKED DAC/WHM | 7DEC06 | DWG. NO. | CB4020 |
| .XXX | ±.010 | RELEASED CGH | 7DEC06 | REV. | 18 |
| .XXXX | ±.001 | REVISED DAC | 7DEC06 | SCALE 1/1 | 7DEC06 |
| | | | | SHEET 2 | OF 2 |