

THREAD T PER MIL-S-8879 OR ISO 5855 / 1&2

RADIAL FLOAT OF NUT ELEMENT .030 FROM CL.

NUT MAY BE REMOVED FROM RETAINER AND REPLACED. THREAD LOCK PER MIL-N-25027. DRI-FILM LUBE ON NUT PER MIL-L-46010 TYPE 1.

NUTPLATE CONFORMS TO AND MEETS THE STRENGTH REQUIREMENTS OF MIL-N-25027.

NUTPLATE ATTACHED BY MEANS OF ADHESIVE APPLIED TO THIS SURFACE.

DISPOSABLE ELASTIC FIXTURE HOLDS NUTPLATE WHILE ADHESIVE CURES.

MATERIAL AND FINISH DATA

CODE	NUT MATERIAL	SPEC.	RETAINER MATL.	SPEC.	FINISH	SPEC.
S	1050 STEEL	AMS 5085	1050 STEEL, 304, 305 CRES	AMS 5085, 5514, 5639	CAD PLATE	QQ-P-416
CR	A-286 CRES	AMS 5525	17-7PH, A-286, 304, 305 CRES	AMS 5528, 5525, 5514, 5639	PASSIVATE	QQ-P-35
CRA	A-286 CRES	AMS 5525	17-7PH, A-286, 304, 305 CRES	AMS 5528, 5525, 5514, 5639	PASSIVATE	QQ-P-35

CODE	BASEPLATE MATERIAL	SPEC	FINISH	SPEC
A	5052 ALUMINUM	AMS 4016	NONE	
AA	5052 ALUMINUM	AMS 4016	ANODIZE	MIL-A-8625 TYPE 1
CR	304 CRES OR A-286 CRES	AMS 5513 OR AMS 5525	PASSIVATE	QQ-P-35
CRA	A-286 CRES	AMS 5525	PASSIVATE	QQ-P-35

THREAD T DATA	
CODE	THREAD SIZE
4	.2500-28 UNJF-3B
420	.2500-20 UNJC-3B
6M	MJ6 X 1,0 4H5H

OPTIONAL PRIMER

CODE	BASEPLATE PRIMER	SPEC
P	EPOXY PRIMER	MIL-P-85582

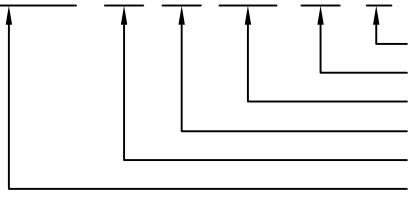
COUNTERBORE DATA - THD. RELIEF R AND NUT HEIGHT H

CODE	NONE	2	3	4	5	6
R ±.025	.150	.235	.298	.361	.424	.488
H ±.025	.362	.424	.487	.549	.609	.672

MINIMUM NUT HEIGHT H LIMITED BY STRENGTH REQUIREMENTS ONLY.

EXAMPLE PART NUMBER

CB3011 A 4 CR 2 P



OPTIONAL PRIMER COATING ON BASEPLATE
 COUNTERBORE SIZE - 2
 NUT AND RETAINER MATL - A-286 NUT, 17-7 PH, A-286 & 304 OR 305 RETAINER
 THREAD SIZE T - .2500-28 UNJF-3B
 BASEPLATE MATERIAL - ALUMINUM
 BASIC PART NUMBER

UNLESS OTHERWISE SPECIFIED, ALL DIMENSIONS ARE IN INCHES AND TOLERANCES ARE AS SHOWN BELOW. DIMENSIONAL TOLERANCES AND SYMBOLS PER ANSI Y14.5M-1982.

PROPRIETARY PARTS SHOWN IN THIS DRAWING ARE THE SUBJECT OF ISSUED UNITED STATES AND FOREIGN PATENTS AND PATENTS PENDING. UNAUTHORIZED REPRODUCTION AND/OR DISTRIBUTION OF THIS DRAWING IS SPECIFICALLY PROHIBITED.



CARSON CITY NEVADA 89706

APPROVALS		DATE	TITLE				
ANGLES	±1°	DRAWN RGP	15FEB96	NUTPLATE, ONE LUG, BONDED			
.XX	±.03	CHECKED DAC	15FEB96	SIZE	CAGE CODE	DWG. NO.	REV.
.XXX	±.010	RELEASED CGH	15FEB96	A	66530	CB3011	9
.XXXX	±.001	REVISED RGP	15FEB96	SCALE	1/1	15FEB96	SHEET 1 OF 1