

PART NUMBERS

THREAD SIZE	TENSILE TESTER	STUD ADAPTER	STANDOFF ADAPTER
.1380-32	CB609	CB609A06	CB609B06
.1640-32		CB609A08	CB609B08
.1900-32		CB609A3	CB609B3
.2500-28		CB609A4	-
.3125-24		CB609A5	-

FASTENER TENSILE TEST:

1. ENSURE THAT ADHESIVE BEAD IS VISIBLE AROUND ENTIRE OUTER EDGE OF BASEPLATE. PRESS ON ADHESIVE WITH FINGER TO DETERMINE IF ADHESIVE IS PROPERLY CURED. ADHESIVE SHOULD NOT FEEL SOFT OR STICKY WHICH WOULD INDICATE AN INCOMPLETE CURE.
2. PLACE THE CB609 AXIAL TENSILE TESTER OVER THE ADHESIVE BONDED FASTENER.
3. STUD: INSTALL THE CB609-A STUD ADAPTER ONTO THE STUD AND TIGHTEN AGAINST THE CB609 TOOL. STANDOFF: SLIDE THE CB609-B STANDOFF ADAPTER ONTO THE STANDOFF AND TURN THE KNOB TO ENGAGE THE FIRST FEW STANDOFF THREADS.
4. APPLY FORCE ON THE CB609 HANDLE UNTIL IT BREAKS OVER AT THE HANDLE PIVOT POINT. A PROPERLY INSTALLED FASTENER WILL REMAIN BONDED TO THE STRUCTURE.
5. REMOVE THE CB609 TOOL AND APPLY A PAINT DOT MARKING TO THE FASTENER BASEPLATE.

ORDERING INSTRUCTIONS: ORDERING THE CB609 PROVIDES ONLY THE AXIAL TENSILE TESTER TOOL. STUD AND STANDOFF ADAPTERS ARE SOLD SEPARATELY. TO ORDER STUD OR STANDOFF ADAPTERS, USE SUFFIX "A" FOR STUD ADAPTER AND "B" FOR STANDOFF ADAPTER.

CALIBRATION INSTRUCTIONS: REFER TO CBPS609

UNLESS OTHERWISE SPECIFIED, ALL DIMENSIONS ARE IN INCHES AND TOLERANCES ARE AS SHOWN BELOW. DIMENSIONAL TOLERANCES AND SYMBOLS PER ANSI Y14.5M-1982.

PROPRIETARY PARTS SHOWN IN THIS DRAWING ARE THE SUBJECT OF ISSUED UNITED STATES AND FOREIGN PATENTS AND PATENTS PENDING. UNAUTHORIZED REPRODUCTION AND/OR DISTRIBUTION OF THIS DRAWING IS SPECIFICALLY PROHIBITED.

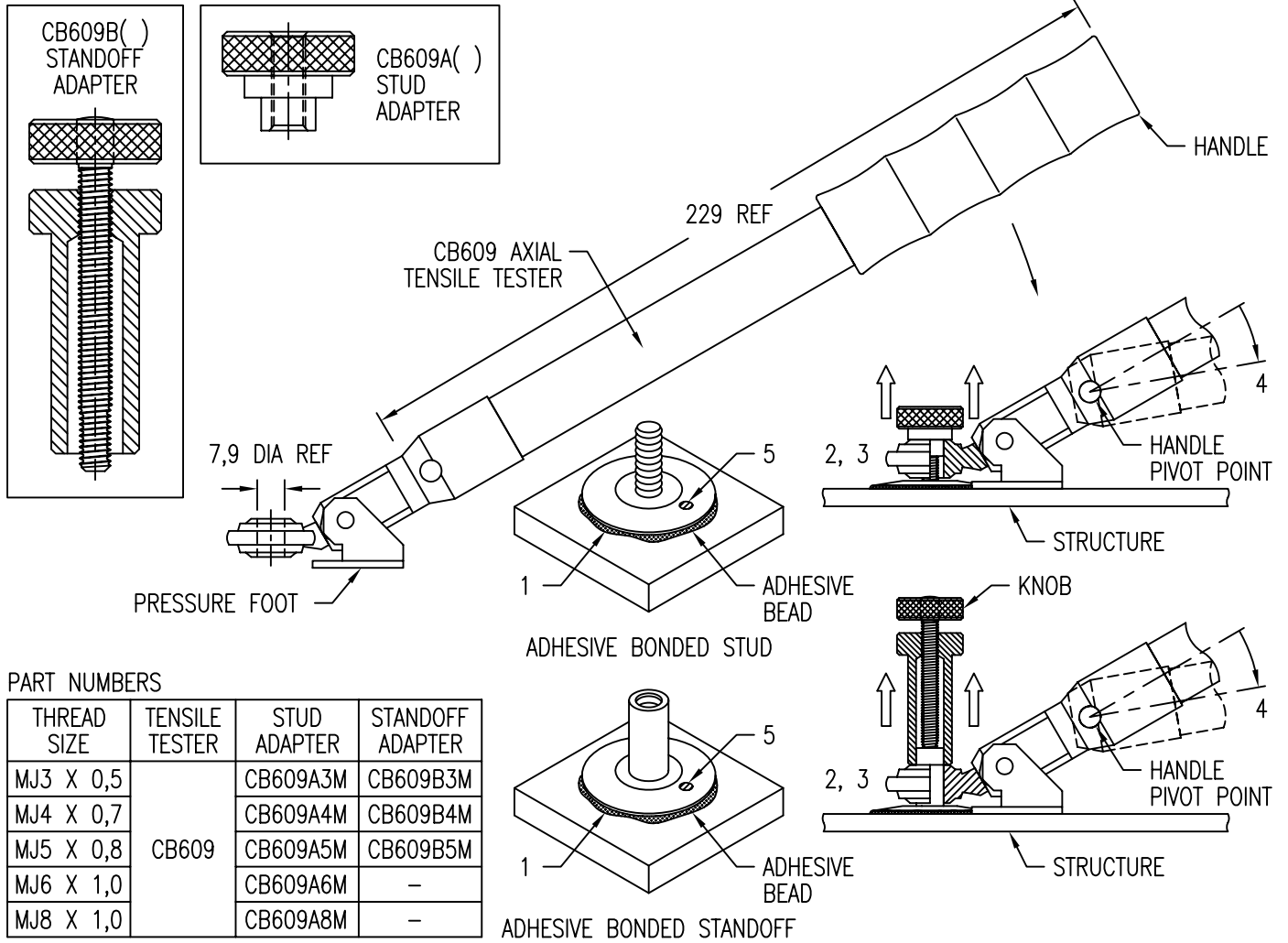
CLICK BOND

CARSON CITY
NEVADA 89706

CAD CB609-1

APPROVALS	DATE
DRAWN <i>DAC</i>	10JUL06
CHECKED <i>DAC</i>	10JUL06
RELEASED <i>CGH</i>	10JUL06
REVISED <i>DAC</i>	10JUL06

TITLE			
AXIAL TENSILE TESTER			
SIZE	CAGE CODE	DWG. NO.	REV.
A	66530	CB609	2
SCALE	1/2	10JUL06	SHEET 1 OF 2



PART NUMBERS

THREAD SIZE	TENSILE TESTER	STUD ADAPTER	STANDOFF ADAPTER
MJ3 X 0,5	CB609	CB609A3M	CB609B3M
MJ4 X 0,7		CB609A4M	CB609B4M
MJ5 X 0,8		CB609A5M	CB609B5M
MJ6 X 1,0		CB609A6M	-
MJ8 X 1,0		CB609A8M	-

FASTENER TENSILE TEST:

- ENSURE THAT ADHESIVE BEAD IS VISIBLE AROUND ENTIRE OUTER EDGE OF BASEPLATE. PRESS ON ADHESIVE WITH FINGER TO DETERMINE IF ADHESIVE IS PROPERLY CURED. ADHESIVE SHOULD NOT FEEL SOFT OR STICKY WHICH WOULD INDICATE AN INCOMPLETE CURE.
- PLACE THE CB609 AXIAL TENSILE TESTER OVER THE ADHESIVE BONDED FASTENER.
- STUD: INSTALL THE CB609-A STUD ADAPTER ONTO THE STUD AND TIGHTEN AGAINST THE CB609 TOOL.
STANDOFF: SLIDE THE CB609-B STANDOFF ADAPTER ONTO THE STANDOFF AND TURN THE KNOB TO ENGAGE THE FIRST FEW STANDOFF THREADS.
- APPLY FORCE ON THE CB609 HANDLE UNTIL IT BREAKS OVER AT THE HANDLE PIVOT POINT. A PROPERLY INSTALLED FASTENER WILL REMAIN BONDED TO THE STRUCTURE.
- REMOVE THE CB609 TOOL AND APPLY A PAINT DOT MARKING TO THE FASTENER BASEPLATE.

ORDERING INSTRUCTIONS: ORDERING THE CB609 PROVIDES ONLY THE AXIAL TENSILE TESTER TOOL. STUD AND STANDOFF ADAPTERS ARE SOLD SEPARATELY. TO ORDER STUD OR STANDOFF ADAPTERS, USE SUFFIX "A" FOR STUD ADAPTER AND "B" FOR STANDOFF ADAPTER.

CALIBRATION INSTRUCTIONS: REFER TO CBPS609

UNLESS OTHERWISE SPECIFIED, ALL DIMENSIONS ARE IN MILLIMETERS AND TOLERANCES ARE AS SHOWN BELOW. DIMENSIONAL TOLERANCES AND SYMBOLS PER ANSI Y14.5M-1982.

CAD CB609-2
METRIC DIMENSIONS

PROPRIETARY PARTS SHOWN IN THIS DRAWING ARE THE SUBJECT OF ISSUED UNITED STATES AND FOREIGN PATENTS AND PATENTS PENDING. UNAUTHORIZED REPRODUCTION AND/OR DISTRIBUTION OF THIS DRAWING IS SPECIFICALLY PROHIBITED.

CLICK BOND

CARSON CITY
NEVADA 89706

APPROVALS	DATE
DRAWN <i>DAC</i>	10JUL06
CHECKED <i>DAC/mtm</i>	10JUL06
RELEASED <i>CGH</i>	10JUL06
REVISED <i>DAC</i>	10JUL06

TITLE			
AXIAL TENSILE TESTER			
SIZE	CAGE CODE	DWG. NO.	REV.
A	66530	CB609 (METRIC)	2
SCALE	1/2	10JUL06	SHEET 2 OF 2